

## Anti-PRKACG antibody (1-80 N-Term) (STJ95116)

STJ95116

### GENERAL INFORMATION

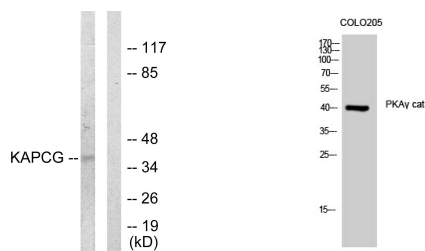
<b>Product Type</b>	Primary antibodies
<b>Short Description</b>	Rabbit polyclonal antibody anti-Camp-Dependent Protein Kinase Catalytic Subunit Gamma (1-80 N-Term) is suitable for use in Western Blot, Immunohistochemistry, Immunofluorescence and ELISA research applications.
<b>Applications</b>	WB, IHC-P, IF-P, ELISA
<b>Host/Source</b>	Rabbit
<b>Reactivity</b>	Human, Rat, Mouse

### PRODUCT PROPERTIES

<b>Clonality</b>	Polyclonal
<b>Clone ID</b>	
<b>Concentration</b>	1 mg/mL
<b>Conjugation</b>	Unconjugated
<b>Purification</b>	The antibody was affinity-purified from rabbit anti-serum by affinity-chromatography.
<b>Dilution Range</b>	WB 1:500-1:2000 IHC 1:100-1:300 ELISA 1:10000
<b>Formulation</b>	PBS, 50% Glycerol, 0.5% BSA and 0.02% Sodium Azide.
<b>Isotype</b>	IgG
<b>Storage Instruction</b>	Store at -20°C for up to 1 year from the date of receipt, and avoid repeat freeze-thaw cycles.

### TARGET INFORMATION

<b>Gene ID</b>	5568
<b>Gene Symbol</b>	PRKACG
<b>Uniprot ID</b>	KAPCG_HUMAN
<b>Immunogen</b>	The antiserum was produced against synthesized peptide derived from human KAPCG at amino acid range 1-50
<b>Immunogen Region</b>	1-80 N-Term
<b>Specificity</b>	PRKACG polyclonal antibody (Camp-Dependent Protein Kinase Catalytic Subunit Gamma) binds to endogenous Camp-Dependent Protein Kinase Catalytic Subunit Gamma at the amino acid region 1-80 N-Term.
<b>Immunogen Sequence</b>	



Western blot analysis of lysates from COLO205 cells, using KAPCG Antibody. The lane on the right is blocked with the synthesized peptide.

Western blot analysis of COLO205 cells using PKAγ cat Polyclonal Antibody

This product is suitable for in-vitro studies under the RESEARCH USE ONLY [RUO] licence. This product must not be used as for diagnostic or other medical purposes.  
St John's Laboratory Ltd, Knowledge Dock Business Centre, University Way, London, E16 2RD | Tel: 0208 223 3081