

Anti-PRKACB antibody (260-340 C-Term) (STJ95115)

STJ95115

GENERAL INFORMATION

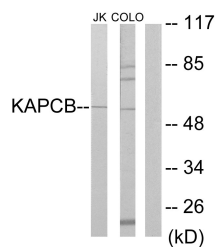
Product Type	Primary antibodies
Short Description	Rabbit polyclonal antibody anti-Camp-Dependent Protein Kinase Catalytic Subunit Beta (260-340 C-Term) is suitable for use in Western Blot, Immunohistochemistry, Immunofluorescence and ELISA research applications.
Applications	WB, IHC-P, IF-P, ELISA
Host/Source	Rabbit
Reactivity	Human, Mouse, Rat

PRODUCT PROPERTIES

Clonality	Polyclonal
Clone ID	
Concentration	1 mg/mL
Conjugation	Unconjugated
Purification	The antibody was affinity-purified from rabbit anti-serum by affinity-chromatography.
Dilution Range	WB 1:500-1:2000 IHC 1:100-1:300 ELISA 1:20000
Formulation	PBS, 50% Glycerol, 0.5% BSA and 0.02% Sodium Azide.
Isotype	IgG
Storage Instruction	Store at -20°C for up to 1 year from the date of receipt, and avoid repeat freeze-thaw cycles.

TARGET INFORMATION

Gene ID	5567
Gene Symbol	PRKACB
Uniprot ID	KAPCB_HUMAN
Immunogen Region	The antiserum was produced against synthesized peptide derived from human KAPCB at amino acid range 291-340
Immunogen Region	260-340 C-Term
Specificity	PRKACB polyclonal antibody (Camp-Dependent Protein Kinase Catalytic Subunit Beta) binds to endogenous Camp-Dependent Protein Kinase Catalytic Subunit Beta at the amino acid region 260-340 C-Term.
Immunogen Sequence	



Western blot analysis of lysates from Jurkat and COLO205 cells, using KAPCB Antibody. The lane on the right is blocked with the synthesized peptide.