

Anti-PKA Alpha/Beta/Gamma cat antibody (140-220) (STJ95114)

STJ95114

GENERAL INFORMATION

Product Type	Primary antibodies
Short Description	Rabbit polyclonal antibody anti-cAMP-dependent protein kinase catalytic subunit alpha and cAMP-dependent protein kinase catalytic subunit beta and cAMP-dependent protein kinase catalytic subunit gamma (140-220) is suitable for use in Western Blot, Im
Applications	WB, IHC-P, IF, ICC, ELISA
Host/Source	Rabbit
Reactivity	Human, Mouse, Rat

PRODUCT PROPERTIES

Clonality	Polyclonal
Clone ID	
Concentration	1 mg/mL
Conjugation	Unconjugated
Purification	The antibody was affinity-purified from rabbit anti-serum by affinity-chromatography.
Dilution Range	WB 1:500-1:2000 IHC 1:100-1:300 IF 1:200-1:1000 ELISA 1:20000
Formulation	PBS, 50% Glycerol, 0.5% BSA and 0.02% Sodium Azide.
Isotype	IgG
Storage Instruction	Store at -20°C for up to 1 year from the date of receipt, and avoid repeat freeze-thaw cycles.

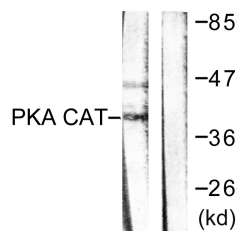
TARGET INFORMATION

Gene ID [5568](#)
[5567](#)
[5566](#)
[PRKACG](#)
[PRKACB](#)
[KAPCG_HUMAN](#)
[KAPCB_HUMAN](#)
[KAPCA_HUMAN](#)

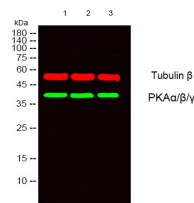
Immunogen The antiserum was produced against synthesized peptide derived from human PKA alpha/beta CAT at amino acid range 166-215
Immunogen Region 140-220

Specificity PKA Alpha/Beta/Gamma cat polyclonal antibody (cAMP-dependent protein kinase catalytic subunit alpha and cAMP-dependent protein kinase catalytic subunit beta and cAMP-dependent protein kinase catalytic subunit gamma) binds to endogenous cAMP-dependent

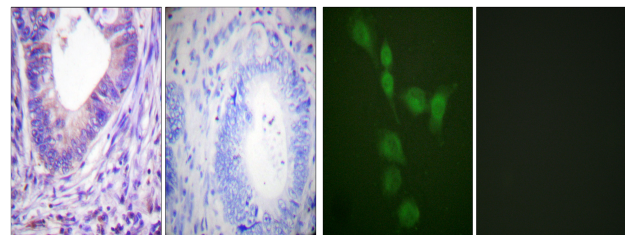
Immunogen Sequence



Western blot analysis of lysates from mouse brain, using PKA alpha/beta CAT Antibody. The lane on the right is blocked with the synthesized peptide.



Western blot analysis of lysates from 1) 22RV1, 2) HeLa, 3) COLO205 cells. (Green) primary antibody was diluted at 1:1000, 4°C over night, secondary antibody (cat: (NA) was diluted at 1:10000, 37°C 1hour. (Red) Tubulin - Beta monoclonal antibody (5G3) (cat: (STJ96932) antibody was diluted at 1:5000 as loading control, 4°C over night, secondary antibody (cat: (NA) was diluted at 1:10000, 37°C 1hour.



Immunohistochemistry analysis of paraffin-embedded human colon carcinoma tissue, using PKA alpha/beta CAT Antibody. The picture on the right is blocked with the synthesized peptide.

Immunofluorescence analysis of A549 cells, using PKA alpha/beta CAT Antibody. The picture on the right is blocked with the synthesized peptide.

This product is suitable for in-vitro studies under the RESEARCH USE ONLY [RUO] licence. This product must not be used as for diagnostic or other medical purposes.
 St John's Laboratory Ltd, Knowledge Dock Business Centre, University Way, London, E16 2RD | Tel: 0208 223 3081