

## Anti-PKA Alpha/Beta cat antibody (1-80 N-Term) (STJ95113)

STJ95113

### GENERAL INFORMATION

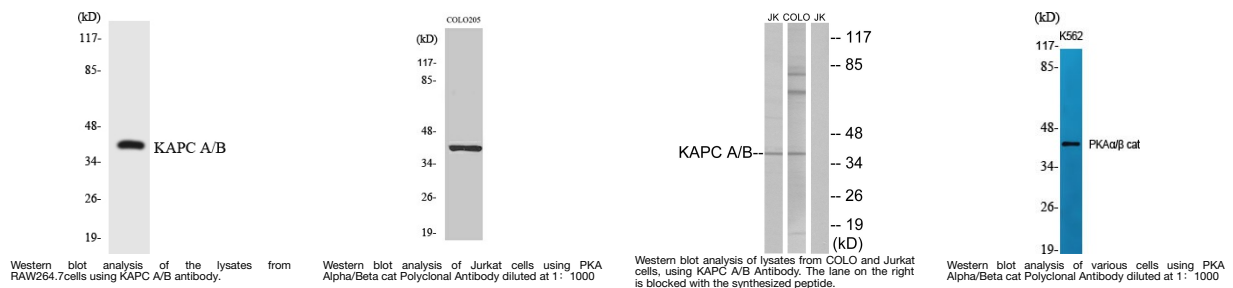
|                          |  |
|--------------------------|--|
| <b>Product Type</b>      | Primary antibodies   |
| <b>Short Description</b> | Rabbit polyclonal antibody anti-cAMP-dependent protein kinase catalytic subunit alpha and cAMP-dependent protein kinase catalytic subunit beta (1-80 N-Term) is suitable for use in Western Blot, Immunohistochemistry, Immunofluorescence, Immunocytochem |
| <b>Applications</b>      | WB, IHC-P, IF, ICC, ELISA  |
| <b>Host/Source</b>       | Rabbit   |
| <b>Reactivity</b>        | Human, Mouse, Rat  |

### PRODUCT PROPERTIES

|                            |  |
|----------------------------|--|
| <b>Clonality</b>           | Polyclonal   |
| <b>Clone ID</b>            |  |
| <b>Concentration</b>       | 1 mg/mL  |
| <b>Conjugation</b>         | Unconjugated   |
| <b>Purification</b>        | The antibody was affinity-purified from rabbit anti-serum by affinity-chromatography.          |
| <b>Dilution</b>            | WB 1:500-1:2000  |
| <b>Range</b>               | IHC 1:100-1:300<br>IF 1:200-1:1000<br>ELISA 1:20000  |
| <b>Formulation</b>         | PBS, 50% Glycerol, 0.5% BSA and 0.02% Sodium Azide.  |
| <b>Isotype</b>             | IgG  |
| <b>Storage Instruction</b> | Store at -20°C for up to 1 year from the date of receipt, and avoid repeat freeze-thaw cycles. |

### TARGET INFORMATION

|                           |  |
|---------------------------|--|
| <b>Gene ID</b>            | <a href="#">5566</a><br><a href="#">5567</a>   |
| <b>Gene Symbol</b>        | <a href="#">PRKACA</a><br><a href="#">PRKACB</a>   |
| <b>Uniprot ID</b>         | <a href="#">KAPCA_HUMAN</a><br><a href="#">KAPCB_HUMAN</a>   |
| <b>Immunogen</b>          | The antiserum was produced against synthesized peptide derived from human KAPC A/B at amino acid range 1-50  |
| <b>Immunogen Region</b>   | 1-80 N-Term  |
| <b>Specificity</b>        | PKA Alpha/Beta cat polyclonal antibody (cAMP-dependent protein kinase catalytic subunit alpha and cAMP-dependent protein kinase catalytic subunit beta) binds to endogenous cAMP-dependent protein kinase catalytic subunit alpha and cAMP-dependent prote |
| <b>Immunogen Sequence</b> |  |



This product is suitable for in-vitro studies under the RESEARCH USE ONLY [RUO] licence. This product must not be used as for diagnostic or other medical purposes.  
St John's Laboratory Ltd, Knowledge Dock Business Centre, University Way, London, E16 2RD | Tel: 0208 223 3081