

Anti-PRKAR2A antibody (10-90 Internal) (STJ95109)

STJ95109

GENERAL INFORMATION

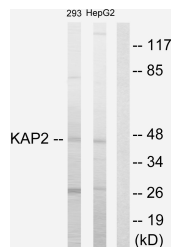
Product Type	Primary antibodies
Short Description	Rabbit polyclonal antibody anti-Camp-Dependent Protein Kinase Type II-Alpha Regulatory Subunit (10-90 Internal) is suitable for use in Western Blot, Immunohistochemistry, Immunofluorescence, Immunocytochemistry and ELISA research applications.
Applications	WB, IHC-P, IF, ICC, ELISA
Host/Source	Rabbit
Reactivity	Human, Rat, Mouse

PRODUCT PROPERTIES

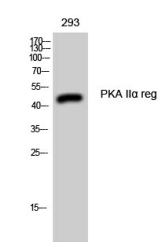
Clonality	Polyclonal
Clone ID	
Concentration	1 mg/mL
Conjugation	Unconjugated
Purification	The antibody was affinity-purified from rabbit anti-serum by affinity-chromatography.
Dilution Range	WB 1:500-1:2000 IHC 1:100-1:300 IF 1:200-1:1000 ELISA 1:10000
Formulation	PBS, 50% Glycerol, 0.5% BSA and 0.02% Sodium Azide.
Isotype	IgG
Storage Instruction	Store at -20°C for up to 1 year from the date of receipt, and avoid repeat freeze-thaw cycles.

TARGET INFORMATION

Gene ID	5576
Gene Symbol	PRKAR2A
Uniprot ID	KAP2_HUMAN
Immunogen	The antiserum was produced against synthesized peptide derived from human KAP2 at amino acid range 41-90
Immunogen Region	10-90 Internal
Specificity	PRKAR2A polyclonal antibody (Camp-Dependent Protein Kinase Type II-Alpha Regulatory Subunit) binds to endogenous Camp-Dependent Protein Kinase Type II-Alpha Regulatory Subunit at the amino acid region 10-90 Internal.
Immunogen Sequence	



Western blot analysis of lysates from 293 and HepG2 cells, using KAP2 Antibody. The lane on the right is blocked with the synthesized peptide.



Western blot analysis of 293 cells using PKA II Alpha reg Polyclonal Antibody

This product is suitable for in-vitro studies under the RESEARCH USE ONLY [RUO] licence. This product must not be used as for diagnostic or other medical purposes.
St John's Laboratory Ltd, Knowledge Dock Business Centre, University Way, London, E16 2RD | Tel: 0208 223 3081