

Anti-PITX1 antibody (90-170 Internal) (STJ95105)

STJ95105

GENERAL INFORMATION

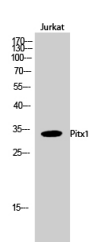
Product Type	Primary antibodies
Short Description	Rabbit polyclonal antibody anti-Pituitary Homeobox 1 (90-170 Internal) is suitable for use in Western Blot, Immunohistochemistry, Immunofluorescence and ELISA research applications.
Applications	WB, IHC-P, IF-P, ELISA
Host/Source	Rabbit
Reactivity	Human, Mouse, Rat

PRODUCT PROPERTIES

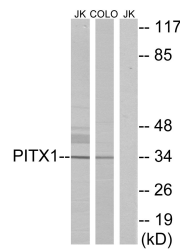
Clonality	Polyclonal
Clone ID	
Concentration	1 mg/mL
Conjugation	Unconjugated
Purification	The antibody was affinity-purified from rabbit anti-serum by affinity-chromatography.
Dilution Range	WB 1:500-1:2000 IHC 1:100-1:300 ELISA 1:20000
Formulation	PBS, 50% Glycerol, 0.5% BSA and 0.02% Sodium Azide.
Isotype	IgG
Storage Instruction	Store at -20°C for up to 1 year from the date of receipt, and avoid repeat freeze-thaw cycles.

TARGET INFORMATION

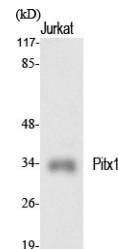
Gene ID	5307
Gene Symbol	PITX1
Uniprot ID	PITX1_HUMAN
Immunogen	The antiserum was produced against synthesized peptide derived from human PITX1 at amino acid range 121-170
Region	90-170 Internal
Specificity	PITX1 polyclonal antibody (Pituitary Homeobox 1) binds to endogenous Pituitary Homeobox 1 at the amino acid region 90-170 Internal.
Immunogen Sequence	



Western blot analysis of Jurkat cells using Pitx1 Polyclonal Antibody cells nucleus extracted by Minute™ Cytoplasmic and Nuclear Fractionation kit (SC-003, Inventiotech, MN, USA).



Western blot analysis of lysates from Jurkat and COLO cells, using PITX1 Antibody. The lane on the right is blocked with the synthesized peptide.



Western blot analysis of various cells using Pitx1 Polyclonal Antibody cells nucleus extracted by Minute™ Cytoplasmic and Nuclear Fractionation kit (SC-003, Inventiotech, MN, USA).

This product is suitable for in-vitro studies under the RESEARCH USE ONLY [RUO] licence. This product must not be used as for diagnostic or other medical purposes.
St John's Laboratory Ltd, Knowledge Dock Business Centre, University Way, London, E16 2RD | Tel: 0208 223 3081