

Anti-CDK11B antibody (10-90 N-Term) (STJ95104)

STJ95104

GENERAL INFORMATION

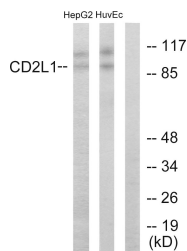
Product Type	Primary antibodies
Short Description	Rabbit polyclonal antibody anti-Cyclin-Dependent Kinase 11b (10-90 N-Term) is suitable for use in Western Blot, Immunohistochemistry, Immunofluorescence and ELISA research applications.
Applications	WB, IHC-P, IF-P, ELISA
Host/Source	Rabbit
Reactivity	Human, Mouse

PRODUCT PROPERTIES

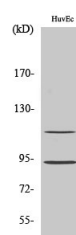
Clonality	Polyclonal
Clone ID	
Concentration	1 mg/mL
Conjugation	Unconjugated
Purification	The antibody was affinity-purified from rabbit anti-serum by affinity-chromatography.
Dilution Range	WB 1:500-1:2000 IHC 1:100-1:300 ELISA 1:20000
Formulation	PBS, 50% Glycerol, 0.5% BSA and 0.02% Sodium Azide.
Isotype	IgG
Storage Instruction	Store at -20°C for up to 1 year from the date of receipt, and avoid repeat freeze-thaw cycles.

TARGET INFORMATION

Gene ID	984
Gene Symbol	CDK11B
Uniprot ID	CD11B_HUMAN
Immunogen	The antiserum was produced against synthesized peptide derived from human CDC2L1 at amino acid range 10-59
Immunogen Region	10-90 N-Term
Specificity	CDK11B polyclonal antibody (Cyclin-Dependent Kinase 11b) binds to endogenous Cyclin-Dependent Kinase 11b at the amino acid region 10-90 N-Term.
Immunogen Sequence	



Western blot analysis of lysates from HUVeC and HepG2 cells, using CDC2L1 Antibody. The lane on the right is blocked with the synthesized peptide.



Western blot analysis of various cells using PITSLRE Polyclonal Antibody.

This product is suitable for in-vitro studies under the RESEARCH USE ONLY [RUO] licence. This product must not be used as for diagnostic or other medical purposes.
St John's Laboratory Ltd, Knowledge Dock Business Centre, University Way, London, E16 2RD | Tel: 0208 223 3081