

Anti-PITPNB antibody (30-110 Internal) (STJ95103)

STJ95103

GENERAL INFORMATION

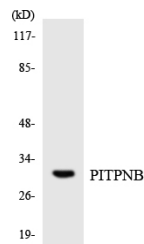
Product Type	Primary antibodies
Short Description	Rabbit polyclonal antibody anti-Phosphatidylinositol Transfer Protein Beta Isoform (30-110 Internal) is suitable for use in Western Blot and ELISA research applications.
Applications	WB, ELISA
Host/Source	Rabbit
Reactivity	Human, Mouse, Rat

PRODUCT PROPERTIES

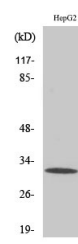
Clonality	Polyclonal
Clone ID	
Concentration	1 mg/mL
Conjugation	Unconjugated
Purification	The antibody was affinity-purified from rabbit anti-serum by affinity-chromatography.
Dilution Range	WB 1:500-1:2000 ELISA 1:40000
Formulation	PBS, 50% Glycerol, 0.5% BSA and 0.02% Sodium Azide.
Isotype	IgG
Storage	Store at -20°C for up to 1 year from the date of receipt, and avoid repeat freeze-thaw cycles.
Instruction	

TARGET INFORMATION

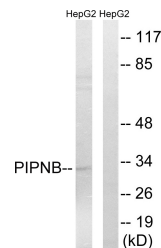
Gene ID	23760
Gene Symbol	PITPNB
Uniprot ID	PIPNB_HUMAN
Immunogen	The antiserum was produced against synthesized peptide derived from human PITPNB at amino acid range 20-69
Immunogen Region	30-110 Internal
Specificity	PITPNB polyclonal antibody (Phosphatidylinositol Transfer Protein Beta Isoform) binds to endogenous Phosphatidylinositol Transfer Protein Beta Isoform at the amino acid region 30-110 Internal.
Immunogen Sequence	



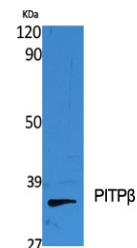
Western blot analysis of the lysates from K562 cells using PITPNB antibody.



Western blot analysis of HepG2 cells using PITP Beta Polyclonal Antibody diluted at 1: 2000



Western blot analysis of lysates from HepG2 cells, using PITPNB Antibody. The lane on the right is blocked with the synthesized peptide.



Western blot analysis of various cells using PITP Beta Polyclonal Antibody diluted at 1: 2000

This product is suitable for in-vitro studies under the RESEARCH USE ONLY [RUO] licence. This product must not be used as for diagnostic or other medical purposes.
St John's Laboratory Ltd, Knowledge Dock Business Centre, University Way, London, E16 2RD | Tel: 0208 223 3081