

Anti-PIP5K1C antibody (280-360 Internal) (STJ95100)

STJ95100

GENERAL INFORMATION

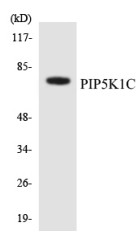
Product Type	Primary antibodies
Short Description	Rabbit polyclonal antibody anti-Phosphatidylinositol 4-Phosphate 5-Kinase Type-1 Gamma (280-360 Internal) is suitable for use in Western Blot and ELISA research applications.
Applications	WB, ELISA
Host/Source	Rabbit
Reactivity	Human, Rat, Mouse

PRODUCT PROPERTIES

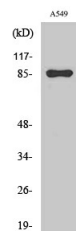
Clonality	Polyclonal
Clone ID	
Concentration	1 mg/mL
Conjugation	Unconjugated
Purification	The antibody was affinity-purified from rabbit anti-serum by affinity-chromatography.
Dilution	WB 1:500-1:2000
Range	ELISA 1:20000
Formulation	PBS, 50% Glycerol, 0.5% BSA and 0.02% Sodium Azide.
Isotype	IgG
Storage	Store at -20°C for up to 1 year from the date of receipt, and avoid repeat freeze-thaw cycles.
Instruction	

TARGET INFORMATION

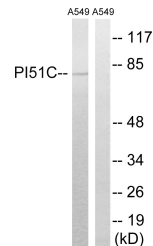
Gene ID	23396
Gene Symbol	PIP5K1C
Uniprot ID	P151C_HUMAN
Immunogen	The antiserum was produced against synthesized peptide derived from human PIP5K1C at amino acid range 305-354
Immunogen Region	280-360 Internal
Specificity	PIP5K1C polyclonal antibody (Phosphatidylinositol 4-Phosphate 5-Kinase Type-1 Gamma) binds to endogenous Phosphatidylinositol 4-Phosphate 5-Kinase Type-1 Gamma at the amino acid region 280-360 Internal.
Immunogen Sequence	



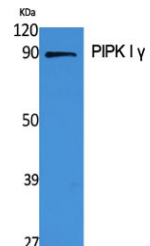
Western blot analysis of the lysates from HepG2 cells using PIP5K1C antibody.



Western blot analysis of A549 cells using PIPK I Gamma Polyclonal Antibody



Western blot analysis of lysates from A549 cells, using PIP5K1C Antibody. The lane on the right is blocked with the synthesized peptide.



Western blot analysis of various cells using PIPK I Gamma Polyclonal Antibody

This product is suitable for in-vitro studies under the RESEARCH USE ONLY [RUO] licence. This product must not be used as for diagnostic or other medical purposes.
 St John's Laboratory Ltd, Knowledge Dock Business Centre, University Way, London, E16 2RD | Tel: 0208 223 3081