

Anti-PIAS3 antibody (10-90 N-Term) (STJ95083)

STJ95083

GENERAL INFORMATION

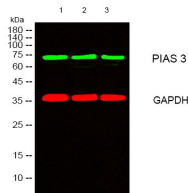
Product Type	Primary antibodies
Short Description	Rabbit polyclonal antibody anti-E3 Sumo-Protein Ligase Pias3 (10-90 N-Term) is suitable for use in Western Blot, Immunohistochemistry, Immunofluorescence and ELISA research applications.
Applications	WB, IHC-P, IF-P, ELISA
Host/Source	Rabbit
Reactivity	Human, Mouse, Rat

PRODUCT PROPERTIES

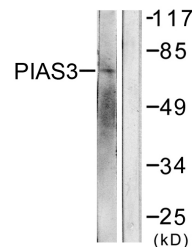
Clonality	Polyclonal
Clone ID	
Concentration	1 mg/mL
Conjugation	Unconjugated
Purification	The antibody was affinity-purified from rabbit anti-serum by affinity-chromatography.
Dilution Range	WB 1:500-1:2000 IHC 1:100-1:300 ELISA 1:10000
Formulation	PBS, 50% Glycerol, 0.5% BSA and 0.02% Sodium Azide.
Isotype	IgG
Storage Instruction	Store at -20°C for up to 1 year from the date of receipt, and avoid repeat freeze-thaw cycles.

TARGET INFORMATION

Gene ID	10401
Gene Symbol	PIAS3
Uniprot ID	PIAS3_HUMAN
Immunogen	The antiserum was produced against synthesized peptide derived from human PIAS3 at amino acid range 10-59
Immunogen Region	10-90 N-Term
Specificity	PIAS3 polyclonal antibody (E3 Sumo-Protein Ligase Pias3) binds to endogenous E3 Sumo-Protein Ligase Pias3 at the amino acid region 10-90 N-Term.
Immunogen Sequence	



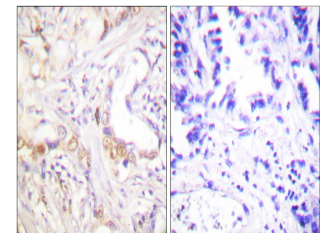
Western blot analysis of lysates from 1) 293, 2) Rat kidney, 3) HELA cells. (Green) primary antibody was diluted at 1:1000, 4°C over night, secondary antibody (cat: NA) was diluted at 1:10000, 37°C 1hour. (Red) GAPDH monoclonal antibody (2B8) (cat: (STJ96931) antibody was diluted at 1:5000 as loading control, 4°C over night, secondary antibody (cat: NA) was diluted at 1:10000, 37°C 1hour.



Western blot analysis of lysates from 293 cells, treated with UV 5', using PIAS3 Antibody. The lane on the right is blocked with the synthesized peptide.



Western blot analysis of 293 cells using PIAS 3 Polyclonal Antibody diluted at 1: 2000 cells nucleus extracted by Minute TM Cytoplasmic and Nuclear Fractionation kit (SC-003, Inventibiotech, MN, USA).



Immunohistochemistry analysis of paraffin-embedded human lung carcinoma tissue, using PIAS3 Antibody. The picture on the right is blocked with the synthesized peptide.

This product is suitable for in-vitro studies under the RESEARCH USE ONLY [RUO] licence. This product must not be used as for diagnostic or other medical purposes.
St John's Laboratory Ltd, Knowledge Dock Business Centre, University Way, London, E16 2RD | Tel: 0208 223 3081