

## Anti-PIAS1 antibody (10-90 N-Term) (STJ95082)

STJ95082

### GENERAL INFORMATION

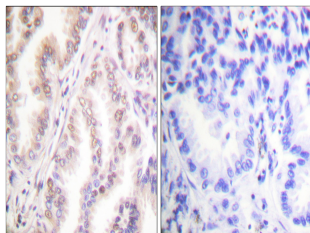
<b>Product Type</b>	Primary antibodies
<b>Short Description</b>	Rabbit polyclonal antibody anti-E3 Sumo-Protein Ligase Pias1 (10-90 N-Term) is suitable for use in Western Blot, Immunohistochemistry, Immunofluorescence and ELISA research applications.
<b>Applications</b>	WB, IHC-P, IF-P, ELISA
<b>Host/Source</b>	Rabbit
<b>Reactivity</b>	Human, Mouse

### PRODUCT PROPERTIES

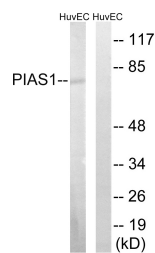
<b>Clonality</b>	Polyclonal
<b>Clone ID</b>	
<b>Concentration</b>	1 mg/mL
<b>Conjugation</b>	Unconjugated
<b>Purification</b>	The antibody was affinity-purified from rabbit anti-serum by affinity-chromatography.
<b>Dilution Range</b>	WB 1:500-1:2000 IHC 1:100-1:300 ELISA 1:10000
<b>Formulation</b>	PBS, 50% Glycerol, 0.5% BSA and 0.02% Sodium Azide.
<b>Isotype</b>	IgG
<b>Storage Instruction</b>	Store at -20°C for up to 1 year from the date of receipt, and avoid repeat freeze-thaw cycles.

### TARGET INFORMATION

<b>Gene ID</b>	8554
<b>Gene Symbol</b>	PIAS1
<b>Uniprot ID</b>	PIAS1_HUMAN
<b>Immunogen</b>	The antiserum was produced against synthesized peptide derived from human PIAS1 at amino acid range 10-59
<b>Immunogen Region</b>	10-90 N-Term
<b>Specificity</b>	PIAS1 polyclonal antibody (E3 Sumo-Protein Ligase Pias1) binds to endogenous E3 Sumo-Protein Ligase Pias1 at the amino acid region 10-90 N-Term.
<b>Immunogen Sequence</b>	



Immunohistochemistry analysis of paraffin-embedded human lung carcinoma tissue, using PIAS1 Antibody. The picture on the right is blocked with the synthesized peptide.



Western blot analysis of lysates from HUVEC cells, using PIAS1 Antibody. The lane on the right is blocked with the synthesized peptide.



Western blot analysis of various cells using PIAS 1 Polyclonal Antibody cells nucleus extracted by Minute™ Cytoplasmic and Nuclear Fractionation kit (SC-003, InventorTech, MN, USA).