

Anti-SERPINB9 antibody (210-290 Internal) (STJ95081)

STJ95081

GENERAL INFORMATION

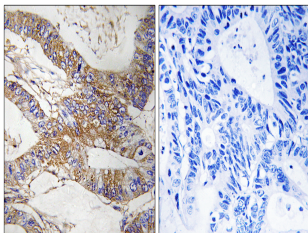
| | |
|--------------------------|---|
| Product Type | Primary antibodies |
| Short Description | Rabbit polyclonal antibody anti-Serpin B9 (210-290 Internal) is suitable for use in Western Blot, Immunohistochemistry, Immunofluorescence and ELISA research applications. |
| Applications | WB, IHC-P, IF-P, ELISA |
| Host/Source | Rabbit |
| Reactivity | Human, Mouse, Rat |

PRODUCT PROPERTIES

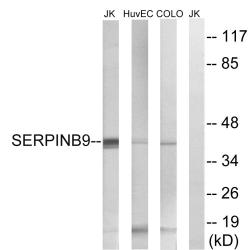
| | |
|----------------------------|--|
| Clonality | Polyclonal |
| Clone ID | |
| Concentration | 1 mg/mL |
| Conjugation | Unconjugated |
| Purification | The antibody was affinity-purified from rabbit anti-serum by affinity-chromatography. |
| Dilution Range | WB 1:500-1:2000 IHC 1:100-1:300 ELISA 1:20000 |
| Formulation | PBS, 50% Glycerol, 0.5% BSA and 0.02% Sodium Azide. |
| Isotype | IgG |
| Storage Instruction | Store at -20°C for up to 1 year from the date of receipt, and avoid repeat freeze-thaw cycles. |

TARGET INFORMATION

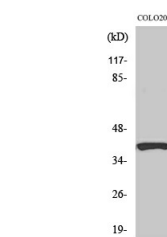
| | |
|---------------------------|---|
| Gene ID | 5272 |
| Gene Symbol | SERPINB9 |
| Uniprot ID | SPB9_HUMAN |
| Immunogen | The antiserum was produced against synthesized peptide derived from human SERPINB9 at amino acid range 241-290 |
| Immunogen Region | 210-290 Internal |
| Specificity | SERPINB9 polyclonal antibody (Serpin B9) binds to endogenous Serpin B9 at the amino acid region 210-290 Internal. |
| Immunogen Sequence | |



Immunohistochemistry analysis of paraffin-embedded human colon carcinoma tissue, using SERPINB9 Antibody. The picture on the right is blocked with the synthesized peptide.



Western blot analysis of lysates from COLO, HUVEC, and Jurkat cells, using SERPINB9 Antibody. The lane on the right is blocked with the synthesized peptide.



Western blot analysis of various cells using PI-9 Polyclonal Antibody diluted at 1: 1000