

## Anti-PI 3-kinase p85 Alpha/Gamma antibody (410-490) (STJ95078)

STJ95078

### GENERAL INFORMATION

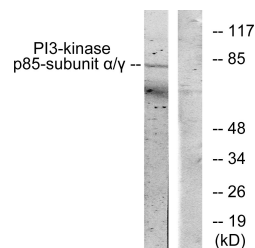
<b>Product Type</b>	Primary antibodies
<b>Short Description</b>	Rabbit polyclonal antibody anti-Phosphatidylinositol 3-kinase regulatory subunit alpha and Phosphatidylinositol 3-kinase regulatory subunit gamma (410-490) is suitable for use in Western Blot, Immunohistochemistry, Immunofluorescence, Immunocytochemistry
<b>Applications</b>	WB, IHC-P, IF, ICC, ELISA
<b>Host/Source</b>	Rabbit
<b>Reactivity</b>	Human, Mouse, Rat, Simian, Chicken

### PRODUCT PROPERTIES

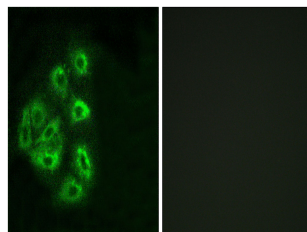
<b>Clonality</b>	Polyclonal
<b>Clone ID</b>	
<b>Concentration</b>	1 mg/mL
<b>Conjugation</b>	Unconjugated
<b>Purification</b>	The antibody was affinity-purified from rabbit anti-serum by affinity-chromatography.
<b>Dilution Range</b>	WB 1:500-1:2000 IHC 1:100-1:300 IF 1:200-1:1000 ELISA 1:20000
<b>Formulation</b>	PBS, 50% Glycerol, 0.5% BSA and 0.02% Sodium Azide.
<b>Isotype</b>	IgG
<b>Storage Instruction</b>	Store at -20°C for up to 1 year from the date of receipt, and avoid repeat freeze-thaw cycles.

### TARGET INFORMATION

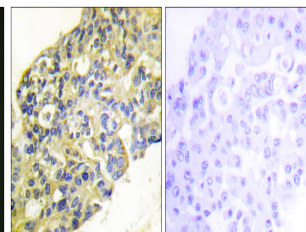
<b>Gene ID</b>	<a href="#">5295</a> <a href="#">8503</a>
<b>Gene Symbol</b>	<a href="#">PIK3R1</a> <a href="#">PIK3R3</a>
<b>Uniprot ID</b>	<a href="#">P85A_HUMAN</a> <a href="#">P55G_HUMAN</a>
<b>Immunogen</b>	The antiserum was produced against synthesized peptide derived from human PI3-kinase p85-alpha/gamma at amino acid range 436-485
<b>Immunogen Region</b>	410-490
<b>Specificity</b>	PI 3-kinase p85 Alpha/Gamma polyclonal antibody (Phosphatidylinositol 3-kinase regulatory subunit alpha and Phosphatidylinositol 3-kinase regulatory subunit gamma) binds to endogenous Phosphatidylinositol 3-kinase regulatory subunit alpha and Phosphatidylinositol 3-kinase regulatory subunit gamma
<b>Immunogen Sequence</b>	



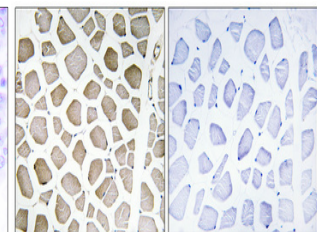
Western blot analysis of lysates from COS7 cells, treated with H<sub>2</sub>O<sub>2</sub> 100 μM 30', using PI3-kinase p85-alpha/gamma Antibody. The lane on the right is blocked with the synthesized peptide.



Immunofluorescence analysis of HeLa cells, using PI3-kinase p85-alpha/gamma Antibody. The picture on the right is blocked with the synthesized peptide.



Immunohistochemistry analysis of paraffin-embedded human breast carcinoma tissue, using PI3-kinase p85-alpha/gamma Antibody. The picture on the right is blocked with the synthesized peptide.



Immunohistochemical analysis of paraffin-embedded Human skeletal muscle. Antibody was diluted at 1:100 (4°C overnight). High-pressure and temperature Tris-EDTA, pH8.0 was used for antigen retrieval. Negative control (right) obtained from antibody was pre-absorbed by immunogen peptide.

This product is suitable for in-vitro studies under the RESEARCH USE ONLY [RUO] licence. This product must not be used as for diagnostic or other medical purposes.  
St John's Laboratory Ltd, Knowledge Dock Business Centre, University Way, London, E16 2RD | Tel: 0208 223 3081