

## Anti-PIK3CA antibody (Internal) (STJ95074)

STJ95074

### GENERAL INFORMATION

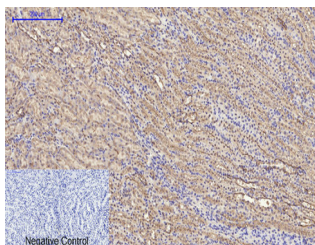
<b>Product Type</b>	Primary antibodies
<b>Short Description</b>	Rabbit polyclonal antibody anti-Phosphatidylinositol 4-5-Bisphosphate 3-Kinase Catalytic Subunit Alpha Isoform (Internal) is suitable for use in Immunofluorescence, Immunocytochemistry, Western Blot, Immunohistochemistry and ELISA research application
<b>Applications</b>	IF, ICC, WB, IHC-P, ELISA
<b>Host/Source</b>	Rabbit
<b>Reactivity</b>	Human, Mouse, Rat

### PRODUCT PROPERTIES

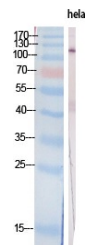
<b>Clonality</b>	Polyclonal
<b>Clone ID</b>	
<b>Concentration</b>	1 mg/mL
<b>Conjugation</b>	Unconjugated
<b>Purification</b>	The antibody was affinity-purified from rabbit anti-serum by affinity-chromatography.
<b>Dilution</b>	IF 1:50-200
<b>Range</b>	WB 1:500-1:2000 IHC 1:100-1:300 ELISA 1:40000
<b>Formulation</b>	PBS, 50% Glycerol, 0.5% BSA and 0.02% Sodium Azide.
<b>Isotype</b>	IgG
<b>Storage Instruction</b>	Store at -20°C for up to 1 year from the date of receipt, and avoid repeat freeze-thaw cycles.

### TARGET INFORMATION

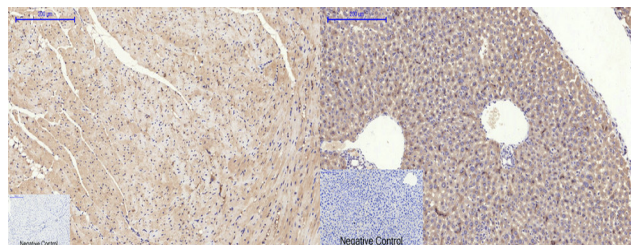
<b>Gene ID</b>	5290
<b>Gene Symbol</b>	PIK3CA
<b>Uniprot ID</b>	PK3CA_HUMAN
<b>Immunogen</b>	The antiserum was produced against synthesized peptide derived from human PI 3-kinase p110alpha at amino acid range 470-519
<b>Immunogen Region</b>	Internal
<b>Specificity</b>	PIK3CA polyclonal antibody (Phosphatidylinositol 4-5-Bisphosphate 3-Kinase Catalytic Subunit Alpha Isoform) binds to endogenous Phosphatidylinositol 4-5-Bisphosphate 3-Kinase Catalytic Subunit Alpha Isoform at the amino acid region Internal.
<b>Immunogen Sequence</b>	



Immunohistochemical analysis of paraffin-embedded Mouse-kidney tissue. 1. PI 3-kinase p110 Alpha Polyclonal Antibody was diluted at 1:200 (4°C, overnight). 2. Sodium citrate pH 6.0 was used for antibody retrieval (-38°C, 20min). 3. Secondary antibody was diluted at 1:200 (room temperature, 30min). Negative control was used by secondary antibody only.



Western blot analysis of various cells using PI 3-kinase p110 Alpha Polyclonal Antibody diluted at 1: 2000



Immunohistochemical analysis of paraffin-embedded Mouse-heart tissue. 1. PI 3-kinase p110 Alpha Polyclonal Antibody was diluted at 1:200 (4°C, overnight). 2. Sodium citrate pH 6.0 was used for antibody retrieval (-38°C, 20min). 3. Secondary antibody was diluted at 1:200 (room temperature, 30min). Negative control was used by secondary antibody only.

Immunohistochemical analysis of paraffin-embedded Mouse-liver tissue. 1. PI 3-kinase p110 Alpha Polyclonal Antibody was diluted at 1:200 (4°C, overnight). 2. Sodium citrate pH 6.0 was used for antibody retrieval (-38°C, 20min). 3. Secondary antibody was diluted at 1:200 (room temperature, 30min). Negative control was used by secondary antibody only.

This product is suitable for in-vitro studies under the RESEARCH USE ONLY [RUO] licence. This product must not be used as for diagnostic or other medical purposes.

St John's Laboratory Ltd, Knowledge Dock Business Centre, University Way, London, E16 2RD | Tel: 0208 223 3081