

Anti-STEAP3 antibody (390-470 C-Term) (STJ95072)

STJ95072

GENERAL INFORMATION

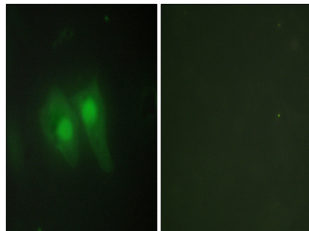
Product Type	Primary antibodies
Short Description	Rabbit polyclonal antibody anti-Metalloreductase Steap3 (390-470 C-Term) is suitable for use in Western Blot, Immunohistochemistry, Immunofluorescence, Immunocytochemistry and ELISA research applications.
Applications	WB, IHC-P, IF, ICC, ELISA
Host/Source	Rabbit
Reactivity	Human, Mouse, Rat

PRODUCT PROPERTIES

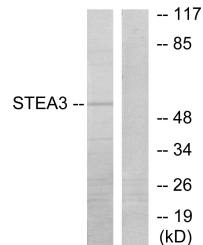
Clonality	Polyclonal
Clone ID	
Concentration	1 mg/mL
Conjugation	Unconjugated
Purification	The antibody was affinity-purified from rabbit anti-serum by affinity-chromatography.
Dilution Range	WB 1:500-1:2000 IHC 1:100-1:300 IF 1:200-1:1000 ELISA 1:10000
Formulation	PBS, 50% Glycerol, 0.5% BSA and 0.02% Sodium Azide.
Isotype	IgG
Storage Instruction	Store at -20°C for up to 1 year from the date of receipt, and avoid repeat freeze-thaw cycles.

TARGET INFORMATION

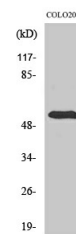
Gene ID	55240
Gene Symbol	STEAP3
Uniprot ID	STEAP3_HUMAN
Immunogen	The antiserum was produced against synthesized peptide derived from human STEA3 at amino acid range 421-470
Immunogen Region	390-470 C-Term
Specificity	STEAP3 polyclonal antibody (Metalloreductase Steap3) binds to endogenous Metalloreductase Steap3 at the amino acid region 390-470 C-Term.
Immunogen Sequence	



Immunofluorescence analysis of HeLa cells, using STEA3 Antibody. The picture on the right is blocked with the synthesized peptide.



Western blot analysis of lysates from COLO205 cells, using STEA3 Antibody. The lane on the right is blocked with the synthesized peptide.



Western blot analysis of various cells using pHyde Polyclonal Antibody

This product is suitable for in-vitro studies under the RESEARCH USE ONLY [RUO] licence. This product must not be used as for diagnostic or other medical purposes.
St John's Laboratory Ltd, Knowledge Dock Business Centre, University Way, London, E16 2RD | Tel: 0208 223 3081