

Anti-OLFML2A antibody (280-360 Internal) (STJ95070)

STJ95070

GENERAL INFORMATION

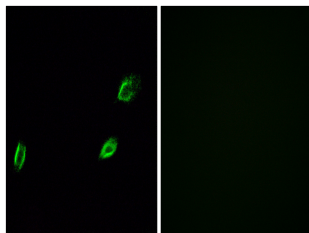
Product Type	Primary antibodies
Short Description	Rabbit polyclonal antibody anti-Olfactomedin-Like Protein 2a (280-360 Internal) is suitable for use in Western Blot, Immunofluorescence, Immunocytochemistry and ELISA research applications.
Applications	WB, IF, ICC, ELISA
Host/Source	Rabbit
Reactivity	Human, Rat, Mouse

PRODUCT PROPERTIES

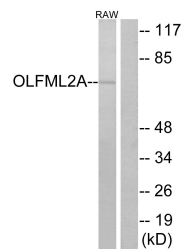
Clonality	Polyclonal
Clone ID	
Concentration	1 mg/mL
Conjugation	Unconjugated
Purification	The antibody was affinity-purified from rabbit anti-serum by affinity-chromatography.
Dilution Range	WB 1:500-1:2000 IF 1:200-1:1000 ELISA 1:10000
Formulation	PBS, 50% Glycerol, 0.5% BSA and 0.02% Sodium Azide.
Isotype	IgG
Storage Instruction	Store at -20°C for up to 1 year from the date of receipt, and avoid repeat freeze-thaw cycles.

TARGET INFORMATION

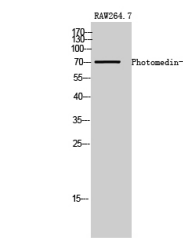
Gene ID	169611
Gene Symbol	OLFML2A
Uniprot ID	OLM2A_HUMAN
Immunogen	The antiserum was produced against synthesized peptide derived from human OLFML2A at amino acid range 311-360
Immunogen Region	280-360 Internal
Specificity	OLFML2A polyclonal antibody (Olfactomedin-Like Protein 2a) binds to endogenous Olfactomedin-Like Protein 2a at the amino acid region 280-360 Internal.
Immunogen Sequence	



Immunofluorescence analysis of A549 cells, using OLFML2A Antibody. The picture on the right is blocked with the synthesized peptide.



Western blot analysis of lysates from RAW264.7 cells, using OLFML2A Antibody. The lane on the right is blocked with the synthesized peptide.



Western blot analysis of RAW264.7 cells using Photomedin-1 Polyclonal Antibody

This product is suitable for in-vitro studies under the RESEARCH USE ONLY [RUO] licence. This product must not be used as for diagnostic or other medical purposes.
St John's Laboratory Ltd, Knowledge Dock Business Centre, University Way, London, E16 2RD | Tel: 0208 223 3081