

Anti-MOB4 antibody (1-80 N-Term) (STJ95069)

STJ95069

GENERAL INFORMATION

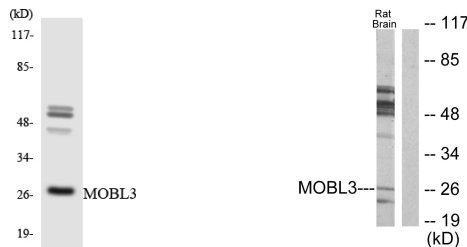
Product Type	Primary antibodies
Short Description	Rabbit polyclonal antibody anti-Mob-Like Protein Phocein (1-80 N-Term) is suitable for use in Western Blot, Immunohistochemistry, Immunofluorescence, Immunocytochemistry and ELISA research applications.
Applications	WB, IHC-P, IF, ICC, ELISA
Host/Source	Rabbit
Reactivity	Human, Mouse, Rat

PRODUCT PROPERTIES

Clonality	Polyclonal
Clone ID	
Concentration	1 mg/mL
Conjugation	Unconjugated
Purification	The antibody was affinity-purified from rabbit anti-serum by affinity-chromatography.
Dilution Range	WB 1:500-1:2000 IHC 1:100-1:300 IF 1:200-1:1000 ELISA 1:20000
Formulation	PBS, 50% Glycerol, 0.5% BSA and 0.02% Sodium Azide.
Isotype	IgG
Storage Instruction	Store at -20°C for up to 1 year from the date of receipt, and avoid repeat freeze-thaw cycles.

TARGET INFORMATION

Gene ID	25843
Gene Symbol	MOB4
Uniprot ID	PHOCN_HUMAN
Immunogen	The antiserum was produced against synthesized peptide derived from human MOBL3 at amino acid range 1-50
Immunogen Region	1-80 N-Term
Specificity	MOB4 polyclonal antibody (Mob-Like Protein Phocein) binds to endogenous Mob-Like Protein Phocein at the amino acid region 1-80 N-Term.
Immunogen Sequence	



Western blot analysis of the lysates from HT-29 cells using MOB3 antibody.

Western blot analysis of lysates from rat brain cells, using MOB3 Antibody. The lane on the right is blocked with the synthesized peptide.

This product is suitable for in-vitro studies under the RESEARCH USE ONLY [RUO] licence. This product must not be used as for diagnostic or other medical purposes.
St John's Laboratory Ltd, Knowledge Dock Business Centre, University Way, London, E16 2RD | Tel: 0208 223 3081