

Anti-PHKB antibody (630-710 Internal) (STJ95066)

STJ95066

GENERAL INFORMATION

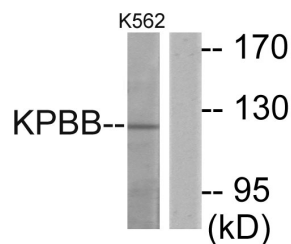
Product Type	Primary antibodies
Short Description	Rabbit polyclonal antibody anti-Phosphorylase B Kinase Regulatory Subunit Beta (630-710 Internal) is suitable for use in Western Blot and ELISA research applications.
Applications	WB, ELISA
Host/Source	Rabbit
Reactivity	Human, Mouse

PRODUCT PROPERTIES

Clonality	Polyclonal
Clone ID	
Concentration	1 mg/mL
Conjugation	Unconjugated
Purification	The antibody was affinity-purified from rabbit anti-serum by affinity-chromatography.
Dilution Range	WB 1:500-1:2000 ELISA 1:40000
Formulation	PBS, 50% Glycerol, 0.5% BSA and 0.02% Sodium Azide.
Isotype	IgG
Storage	Store at -20°C for up to 1 year from the date of receipt, and avoid repeat freeze-thaw cycles.
Instruction	

TARGET INFORMATION

Gene ID	5257
Gene Symbol	PHKB
Uniprot ID	KPBB_HUMAN
Immunogen	The antiserum was produced against synthesized peptide derived from human KPBB at amino acid range 661-710
Immunogen Region	630-710 Internal
Specificity	PHKB polyclonal antibody (Phosphorylase B Kinase Regulatory Subunit Beta) binds to endogenous Phosphorylase B Kinase Regulatory Subunit Beta at the amino acid region 630-710 Internal.
Immunogen Sequence	



Western blot analysis of lysates from K562 cells, using KPBB Antibody. The lane on the right is blocked with the synthesized peptide.