

Anti-PHKA1/2 antibody (1-80 N-Term) (STJ95065)

STJ95065

GENERAL INFORMATION

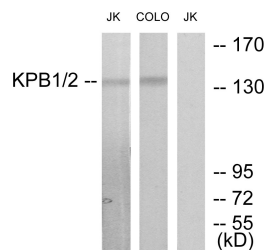
Product Type	Primary antibodies
Short Description	Rabbit polyclonal antibody anti-Phosphorylase b kinase regulatory subunit alpha, skeletal muscle isoform and Phosphorylase b kinase regulatory subunit alpha, liver isoform (1-80 N-Term) is suitable for use in Western Blot, Immunofluorescence, Immunoc
Applications	WB, IF, ICC, ELISA
Host/Source	Rabbit
Reactivity	Human, Mouse, Rat

PRODUCT PROPERTIES

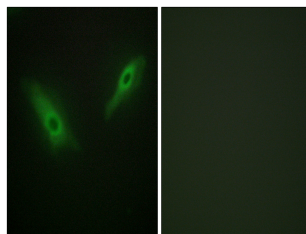
Clonality	Polyclonal
Clone ID	
Concentration	1 mg/mL
Conjugation	Unconjugated
Purification	The antibody was affinity-purified from rabbit anti-serum by affinity-chromatography.
Dilution Range	WB 1:500-1:2000 IF 1:200-1:1000 ELISA 1:20000
Formulation	PBS, 50% Glycerol, 0.5% BSA and 0.02% Sodium Azide.
Isotype	IgG
Storage Instruction	Store at -20°C for up to 1 year from the date of receipt, and avoid repeat freeze-thaw cycles.

TARGET INFORMATION

Gene ID	5255 5256
Gene Symbol	PHKA1 PHKA2
Uniprot ID	KPB1_HUMAN KPB2_HUMAN
Immunogen Region	The antiserum was produced against synthesized peptide derived from human KPB1/2 at amino acid range 31-80 1-80 N-Term
Specificity	PHKA1/2 polyclonal antibody (Phosphorylase b kinase regulatory subunit alpha, skeletal muscle isoform and Phosphorylase b kinase regulatory subunit alpha, liver isoform) binds to endogenous Phosphorylase b kinase regulatory subunit alpha, skeletal mu
Immunogen Sequence	



Western blot analysis of lysates from Jurkat and COLO205 cells, using KPBI/2 Antibody. The lane on the right is blocked with the synthesized peptide.



Immunofluorescence analysis of HeLa cells, using KPBI/2 Antibody. The picture on the right is blocked with the synthesized peptide.

This product is suitable for in-vitro studies under the RESEARCH USE ONLY [RUO] licence. This product must not be used as for diagnostic or other medical purposes.
St John's Laboratory Ltd, Knowledge Dock Business Centre, University Way, London, E16 2RD | Tel: 0208 223 3081