

Anti-PHF1 antibody (320-400 Internal) (STJ95062)

STJ95062

GENERAL INFORMATION

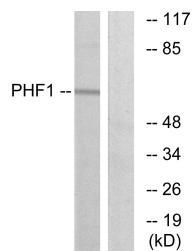
| | |
|--------------------------|--|
| Product Type | Primary antibodies |
| Short Description | Rabbit polyclonal antibody anti-Phd Finger Protein 1 (320-400 Internal) is suitable for use in Western Blot, Immunohistochemistry, Immunofluorescence and ELISA research applications. |
| Applications | WB, IHC-P, IF-P, ELISA |
| Host/Source | Rabbit |
| Reactivity | Human, Mouse, Rat |

PRODUCT PROPERTIES

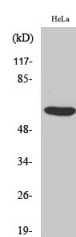
| | |
|----------------------------|--|
| Clonality | Polyclonal |
| Clone ID | |
| Concentration | 1 mg/mL |
| Conjugation | Unconjugated |
| Purification | The antibody was affinity-purified from rabbit anti-serum by affinity-chromatography. |
| Dilution Range | WB 1:500-1:2000 IHC 1:100-1:300 ELISA 1:10000 |
| Formulation | PBS, 50% Glycerol, 0.5% BSA and 0.02% Sodium Azide. |
| Isotype | IgG |
| Storage Instruction | Store at -20°C for up to 1 year from the date of receipt, and avoid repeat freeze-thaw cycles. |

TARGET INFORMATION

| | |
|---------------------------|---|
| Gene ID | 5252 |
| Gene Symbol | PHF1 |
| Uniprot ID | PHF1_HUMAN |
| Immunogen | The antiserum was produced against synthesized peptide derived from human PHF1 at amino acid range 345-394 |
| Immunogen Region | 320-400 Internal |
| Specificity | PHF1 polyclonal antibody (Phd Finger Protein 1) binds to endogenous Phd Finger Protein 1 at the amino acid region 320-400 Internal. |
| Immunogen Sequence | |



Western blot analysis of lysates from HeLa cells, using PHF1 Antibody. The lane on the right is blocked with the synthesized peptide.



Western blot analysis of various cells using PHF1 Polyclonal Antibody cells nucleus extracted by Minute™ Cytoplasmic and Nuclear Fractionation kit (SC-003, Inventibiotech, MN, USA).

This product is suitable for in-vitro studies under the RESEARCH USE ONLY [RUO] licence. This product must not be used as for diagnostic or other medical purposes.
St John's Laboratory Ltd, Knowledge Dock Business Centre, University Way, London, E16 2RD | Tel: 0208 223 3081