

Anti-PHAX antibody (110-190 Internal) (STJ95061)

STJ95061

GENERAL INFORMATION

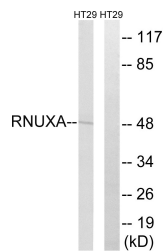
Product Type	Primary antibodies
Short Description	Rabbit polyclonal antibody anti-Phosphorylated Adapter Rna Export Protein (110-190 Internal) is suitable for use in Western Blot and ELISA research applications.
Applications	WB, ELISA
Host/Source	Rabbit
Reactivity	Human, Rat, Mouse

PRODUCT PROPERTIES

Clonality	Polyclonal
Clone ID	
Concentration	1 mg/mL
Conjugation	Unconjugated
Purification	The antibody was affinity-purified from rabbit anti-serum by affinity-chromatography.
Dilution Range	WB 1:500-1:2000 ELISA 1:20000
Formulation	PBS, 50% Glycerol, 0.5% BSA and 0.02% Sodium Azide.
Isotype	IgG
Storage	Store at -20°C for up to 1 year from the date of receipt, and avoid repeat freeze-thaw cycles.
Instruction	

TARGET INFORMATION

Gene ID	51808
Gene Symbol	PHAX
Uniprot ID	PHAX_HUMAN
Immunogen	The antiserum was produced against synthesized peptide derived from human RNUXA at amino acid range 141-190
Immunogen Region	110-190 Internal
Specificity	PHAX polyclonal antibody (Phosphorylated Adapter Rna Export Protein) binds to endogenous Phosphorylated Adapter Rna Export Protein at the amino acid region 110-190 Internal.
Immunogen Sequence	



Western blot analysis of lysates from HT-29 cells, using RNUXA Antibody. The lane on the right is blocked with the synthesized peptide.

This product is suitable for in-vitro studies under the RESEARCH USE ONLY [RUO] licence. This product must not be used as for diagnostic or other medical purposes.
St John's Laboratory Ltd, Knowledge Dock Business Centre, University Way, London, E16 2RD | Tel: 0208 223 3081