

Anti-PHACTR4 antibody (340-420 Internal) (STJ95059)

STJ95059

GENERAL INFORMATION

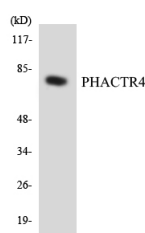
| | |
|--------------------------|---|
| Product Type | Primary antibodies |
| Short Description | Rabbit polyclonal antibody anti-Phosphatase And Actin Regulator 4 (340-420 Internal) is suitable for use in Western Blot and ELISA research applications. |
| Applications | WB, ELISA |
| Host/Source | Rabbit |
| Reactivity | Human, Rat, Mouse |

PRODUCT PROPERTIES

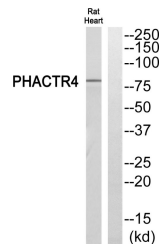
| | |
|----------------------------|--|
| Clonality | Polyclonal |
| Clone ID | |
| Concentration | 1 mg/mL |
| Conjugation | Unconjugated |
| Purification | The antibody was affinity-purified from rabbit anti-serum by affinity-chromatography. |
| Dilution Range | WB 1:500-1:2000 ELISA 1:20000 |
| Formulation | PBS, 50% Glycerol, 0.5% BSA and 0.02% Sodium Azide. |
| Isotype | IgG |
| Storage Instruction | Store at -20°C for up to 1 year from the date of receipt, and avoid repeat freeze-thaw cycles. |

TARGET INFORMATION

| | |
|---------------------------|--|
| Gene ID | 65979 |
| Gene Symbol | PHACTR4 |
| Uniprot ID | PHAR4_HUMAN |
| Immunogen | The antiserum was produced against synthesized peptide derived from human PHACTR4 at amino acid range 363-412 |
| Immunogen Region | 340-420 Internal |
| Specificity | PHACTR4 polyclonal antibody (Phosphatase And Actin Regulator 4) binds to endogenous Phosphatase And Actin Regulator 4 at the amino acid region 340-420 Internal. |
| Immunogen Sequence | |



Western blot analysis of the lysates from HeLa cells using PHACTR4 antibody.



Western blot analysis of PHACTR4 Antibody. The lane on the right is blocked with the PHACTR4 peptide.

This product is suitable for in-vitro studies under the RESEARCH USE ONLY [RUO] licence. This product must not be used as for diagnostic or other medical purposes.
St John's Laboratory Ltd, Knowledge Dock Business Centre, University Way, London, E16 2RD | Tel: 0208 223 3081