

Anti-ABCB1 antibody (Internal) (STJ95057)

STJ95057

GENERAL INFORMATION

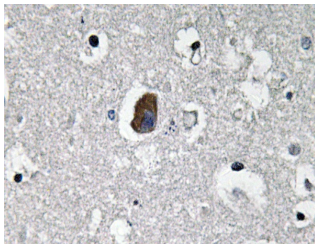
Product Type	Primary antibodies
Short Description	Rabbit polyclonal antibody anti-Atp-Dependent Translocase Abcb1 (Internal) is suitable for use in Western Blot, Immunohistochemistry, Immunofluorescence and ELISA research applications.
Applications	WB, IHC-P, IF-P, ELISA
Host/Source	Rabbit
Reactivity	Human, Mouse, Rat

PRODUCT PROPERTIES

Clonality	Polyclonal
Clone ID	
Concentration	1 mg/mL
Conjugation	Unconjugated
Purification	The antibody was affinity-purified from rabbit anti-serum by affinity-chromatography.
Dilution Range	IHC 1:100-1:300 ELISA 1:40000
Formulation	PBS, 50% Glycerol, 0.5% BSA and 0.02% Sodium Azide.
Isotype	IgG
Storage Instruction	Store at -20°C for up to 1 year from the date of receipt, and avoid repeat freeze-thaw cycles.

TARGET INFORMATION

Gene ID	5243
Gene Symbol	ABCB1
Uniprot ID	MDR1_HUMAN
Immunogen	The antiserum was produced against synthesized peptide derived from human P-glycoprotein 1 at amino acid range 534-583
Immunogen Region	Internal
Specificity	ABCB1 polyclonal antibody (Atp-Dependent Translocase Abcb1) binds to endogenous Atp-Dependent Translocase Abcb1 at the amino acid region Internal.
Immunogen Sequence	



Immunohistochemistry analysis of Mdr-1 antibody in paraffin-embedded human brain tissue.

This product is suitable for in-vitro studies under the RESEARCH USE ONLY [RUO] licence. This product must not be used as for diagnostic or other medical purposes.
St John's Laboratory Ltd, Knowledge Dock Business Centre, University Way, London, E16 2RD | Tel: 0208 223 3081