

Anti-PGLS antibody (160-240 C-Term) (STJ95056)

STJ95056

GENERAL INFORMATION

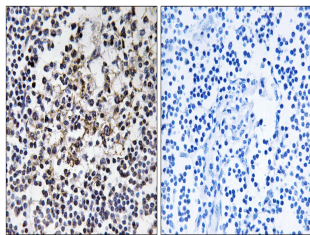
Product Type	Primary antibodies
Short Description	Rabbit polyclonal antibody anti-6-Phosphogluconolactonase (160-240 C-Term) is suitable for use in Western Blot, Immunohistochemistry, Immunofluorescence and ELISA research applications.
Applications	WB, IHC-P, IF-P, ELISA
Host/Source	Rabbit
Reactivity	Human, Rat, Mouse

PRODUCT PROPERTIES

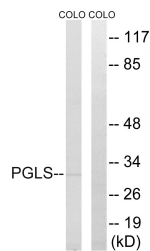
Clonality	Polyclonal
Clone ID	
Concentration	1 mg/mL
Conjugation	Unconjugated
Purification	The antibody was affinity-purified from rabbit anti-serum by affinity-chromatography.
Dilution Range	WB 1:500-1:2000 IHC 1:100-1:300 ELISA 1:40000
Formulation	PBS, 50% Glycerol, 0.5% BSA and 0.02% Sodium Azide.
Isotype	IgG
Storage Instruction	Store at -20°C for up to 1 year from the date of receipt, and avoid repeat freeze-thaw cycles.

TARGET INFORMATION

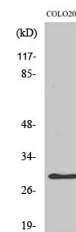
Gene ID	25796
Gene Symbol	PGLS
Uniprot ID	6PGL_HUMAN
Immunogen	The antiserum was produced against synthesized peptide derived from human PGLS at amino acid range 191-240
Immunogen Region	160-240 C-Term
Specificity	PGLS polyclonal antibody (6-Phosphogluconolactonase) binds to endogenous 6-Phosphogluconolactonase at the amino acid region 160-240 C-Term.
Immunogen Sequence	



Immunohistochemistry analysis of paraffin-embedded human lymph node tissue, using PGLS Antibody. The picture on the right is blocked with the synthesized peptide.



Western blot analysis of lysates from COLO cells, using PGLS Antibody. The lane on the right is blocked with the synthesized peptide.



Western blot analysis of various cells using PGLS Polyclonal Antibody