

Anti-PGBD1 antibody (210-290 Internal) (STJ95052)

STJ95052

GENERAL INFORMATION

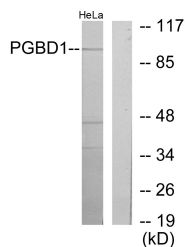
Product Type	Primary antibodies
Short Description	Rabbit polyclonal antibody anti-Piggybac Transposable Element-Derived Protein 1 (210-290 Internal) is suitable for use in Western Blot, Immunohistochemistry, Immunofluorescence and ELISA research applications.
Applications	WB, IHC-P, IF-P, ELISA
Host/Source	Rabbit
Reactivity	Human, Rat, Mouse

PRODUCT PROPERTIES

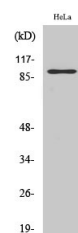
Clonality	Polyclonal
Clone ID	
Concentration	1 mg/mL
Conjugation	Unconjugated
Purification	The antibody was affinity-purified from rabbit anti-serum by affinity-chromatography.
Dilution Range	WB 1:500-1:2000 IHC 1:100-1:300 ELISA 1:20000
Formulation	PBS, 50% Glycerol, 0.5% BSA and 0.02% Sodium Azide.
Isotype	IgG
Storage Instruction	Store at -20°C for up to 1 year from the date of receipt, and avoid repeat freeze-thaw cycles.

TARGET INFORMATION

Gene ID	84547
Gene Symbol	PGBD1
Uniprot ID	PGBD1_HUMAN
Immunogen	The antiserum was produced against synthesized peptide derived from human PGBD1 at amino acid range 241-290
Immunogen Region	210-290 Internal
Specificity	PGBD1 polyclonal antibody (Piggybac Transposable Element-Derived Protein 1) binds to endogenous Piggybac Transposable Element-Derived Protein 1 at the amino acid region 210-290 Internal.
Immunogen Sequence	



Western blot analysis of lysates from HeLa cells, using PGBD1 Antibody. The lane on the right is blocked with the synthesized peptide.



Western blot analysis of various cells using PGBD1 Polyclonal Antibody cells nucleus extracted by Minute™ Cytoplasmic and Nuclear Fractionation kit (SC-003, Inventiotech, MN, USA).

This product is suitable for in-vitro studies under the RESEARCH USE ONLY [RUO] licence. This product must not be used as for diagnostic or other medical purposes.
St John's Laboratory Ltd, Knowledge Dock Business Centre, University Way, London, E16 2RD | Tel: 0208 223 3081