

Anti-PFK-2 liv/tes antibody (300-380 Internal) (STJ95049)

STJ95049

GENERAL INFORMATION

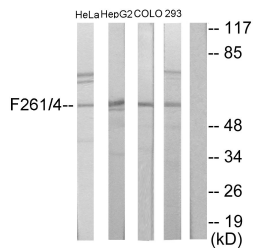
Product Type	Primary antibodies
Short Description	Rabbit polyclonal antibody anti-6-phosphofructo-2-kinase/fructose-2, 6-bisphosphatase 1 and 6-phosphofructo-2-kinase/fructose-2, 6-bisphosphatase 4 (300-380 Internal) is suitable for use in Western Blot and ELISA research applications.
Applications	WB, ELISA
Host/Source	Rabbit
Reactivity	Human, Mouse, Rat

PRODUCT PROPERTIES

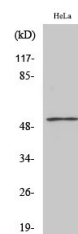
Clonality	Polyclonal
Clone ID	
Concentration	1 mg/mL
Conjugation	Unconjugated
Purification	The antibody was affinity-purified from rabbit anti-serum by affinity-chromatography.
Dilution	WB 1:500-1:2000
Range	ELISA 1:20000
Formulation	PBS, 50% Glycerol, 0.5% BSA and 0.02% Sodium Azide.
Isotype	IgG
Storage	Store at -20°C for up to 1 year from the date of receipt, and avoid repeat freeze-thaw cycles.
Instruction	

TARGET INFORMATION

Gene ID	5210 5207
Gene Symbol	PFKFB4 PFKFB1
Uniprot ID	F264_HUMAN F261_HUMAN
Immunogen	The antiserum was produced against synthesized peptide derived from human PFKFB1/4 at amino acid range 331-380
Immunogen Region	300-380 Internal
Specificity	PFK-2 liv/tes polyclonal antibody (6-phosphofructo-2-kinase/fructose-2, 6-bisphosphatase 1 and 6-phosphofructo-2-kinase/fructose-2, 6-bisphosphatase 4) binds to endogenous 6-phosphofructo-2-kinase/fructose-2, 6-bisphosphatase 1 and 6-phosphofructo-2-
Immunogen Sequence	



Western blot analysis of lysates from HeLa, HepG2, COLO205, and 293 cells, using PFKFB1/4 Antibody. The lane on the right is blocked with the synthesized peptide.



Western blot analysis of various cells using PFK-2 liv/tes Polyclonal Antibody

This product is suitable for in-vitro studies under the RESEARCH USE ONLY [RUO] licence. This product must not be used as for diagnostic or other medical purposes.
St John's Laboratory Ltd, Knowledge Dock Business Centre, University Way, London, E16 2RD | Tel: 0208 223 3081