

Anti-PFKFB2 antibody (420-500) (STJ95046)

STJ95046

GENERAL INFORMATION

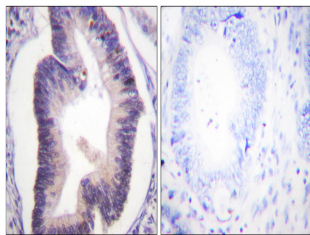
Product Type	Primary antibodies
Short Description	Rabbit polyclonal antibody anti-6-Phosphofructo-2-Kinase/Fructose-2-6-Bisphosphatase 2 (420-500) is suitable for use in Western Blot, Immunohistochemistry, Immunofluorescence and ELISA research applications.
Applications	WB, IHC-P, IF-P, ELISA
Host/Source	Rabbit
Reactivity	Human, Mouse, Rat

PRODUCT PROPERTIES

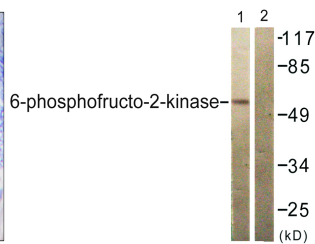
Clonality	Polyclonal
Clone ID	
Concentration	1 mg/mL
Conjugation	Unconjugated
Purification	The antibody was affinity-purified from rabbit anti-serum by affinity-chromatography.
Dilution Range	WB 1:500-1:2000 IHC 1:100-1:300 ELISA 1:5000
Formulation	PBS, 50% Glycerol, 0.5% BSA and 0.02% Sodium Azide.
Isotype	IgG
Storage Instruction	Store at -20°C for up to 1 year from the date of receipt, and avoid repeat freeze-thaw cycles.

TARGET INFORMATION

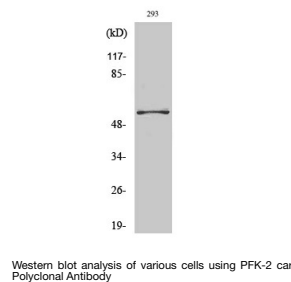
Gene ID	5208
Gene Symbol	PFKFB2
Uniprot ID	F262_HUMAN
Immunogen Region	The antiserum was produced against synthesized peptide derived from human PFKFB2 at amino acid range 451-500
Immunogen Region	420-500
Specificity	PFKFB2 polyclonal antibody (6-Phosphofructo-2-Kinase/Fructose-2-6-Bisphosphatase 2) binds to endogenous 6-Phosphofructo-2-Kinase/Fructose-2-6-Bisphosphatase 2 at the amino acid region 420-500.
Immunogen Sequence	



Immunohistochemistry analysis of paraffin-embedded human colon carcinoma tissue, using PFKFB2 Antibody. The picture on the right is blocked with the synthesized peptide.



Western blot analysis of lysates from 293 cells, treated with Heat shock, using PFKFB2 Antibody. The lane on the right is blocked with the synthesized peptide.



Western blot analysis of various cells using PFK-2 car Polyclonal Antibody

This product is suitable for in-vitro studies under the RESEARCH USE ONLY [RUO] licence. This product must not be used as for diagnostic or other medical purposes.
St John's Laboratory Ltd, Knowledge Dock Business Centre, University Way, London, E16 2RD | Tel: 0208 223 3081