

Anti-N4BP2L2 antibody (330-410 Internal) (STJ95044)

STJ95044

GENERAL INFORMATION

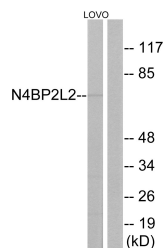
Product Type	Primary antibodies
Short Description	Rabbit polyclonal antibody anti-Nedd4-Binding Protein 2-Like 2 (330-410 Internal) is suitable for use in Western Blot and ELISA research applications.
Applications	WB, ELISA
Host/Source	Rabbit
Reactivity	Human, Mouse

PRODUCT PROPERTIES

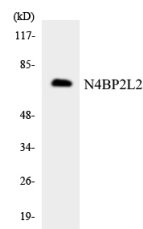
Clonality	Polyclonal
Clone ID	
Concentration	1 mg/mL
Conjugation	Unconjugated
Purification	The antibody was affinity-purified from rabbit anti-serum by affinity-chromatography.
Dilution Range	WB 1:500-1:2000 ELISA 1:10000
Formulation	PBS, 50% Glycerol, 0.5% BSA and 0.02% Sodium Azide.
Isotype	IgG
Storage	Store at -20°C for up to 1 year from the date of receipt, and avoid repeat freeze-thaw cycles.
Instruction	

TARGET INFORMATION

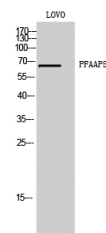
Gene ID	10443
Gene Symbol	N4BP2L2
Uniprot ID	N42L2_HUMAN
Immunogen	The antiserum was produced against synthesized peptide derived from human N4BP2L2 at amino acid range 358-407
Immunogen Region	330-410 Internal
Specificity	N4BP2L2 polyclonal antibody (Nedd4-Binding Protein 2-Like 2) binds to endogenous Nedd4-Binding Protein 2-Like 2 at the amino acid region 330-410 Internal.
Immunogen Sequence	



Western blot analysis of lysates from LOVO cells, using N4BP2L2 Antibody. The lane on the right is blocked with the synthesized peptide.



Western blot analysis of the lysates from K562 cells using N4BP2L2 antibody.



Western blot analysis of LOVO cells using PFAAP5 Polyclonal Antibody.