

Anti-PEX14 antibody (90-170 Internal) (STJ95038)

STJ95038

GENERAL INFORMATION

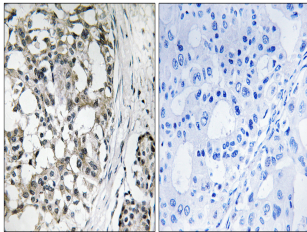
Product Type	Primary antibodies
Short Description	Rabbit polyclonal antibody anti-Peroxisomal Membrane Protein Pex14 (90-170 Internal) is suitable for use in Western Blot, Immunohistochemistry, Immunofluorescence and ELISA research applications.
Applications	WB, IHC-P, IF-P, ELISA
Host/Source	Rabbit
Reactivity	Human, Mouse, Rat

PRODUCT PROPERTIES

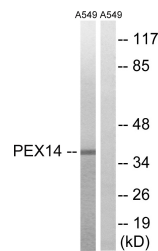
Clonality	Polyclonal
Clone ID	
Concentration	1 mg/mL
Conjugation	Unconjugated
Purification	The antibody was affinity-purified from rabbit anti-serum by affinity-chromatography.
Dilution Range	WB 1:500-1:2000 IHC 1:100-1:300 ELISA 1:20000
Formulation	PBS, 50% Glycerol, 0.5% BSA and 0.02% Sodium Azide.
Isotype	IgG
Storage Instruction	Store at -20°C for up to 1 year from the date of receipt, and avoid repeat freeze-thaw cycles.

TARGET INFORMATION

Gene ID	5195
Gene Symbol	PEX14
Uniprot ID	PEX14_HUMAN
Immunogen	The antiserum was produced against synthesized peptide derived from human PEX14 at amino acid range 117-166
Immunogen Region	90-170 Internal
Specificity	PEX14 polyclonal antibody (Peroxisomal Membrane Protein Pex14) binds to endogenous Peroxisomal Membrane Protein Pex14 at the amino acid region 90-170 Internal.
Immunogen Sequence	



Immunohistochemistry analysis of paraffin-embedded human breast carcinoma tissue, using PEX14 Antibody. The picture on the right is blocked with the synthesized peptide.



Western blot analysis of lysates from A549 cells, using PEX14 Antibody. The lane on the right is blocked with the synthesized peptide.



Western blot analysis of various cells using Peroxin 14 Polyclonal Antibody

This product is suitable for in-vitro studies under the RESEARCH USE ONLY [RUO] licence. This product must not be used as for diagnostic or other medical purposes.
St John's Laboratory Ltd, Knowledge Dock Business Centre, University Way, London, E16 2RD | Tel: 0208 223 3081