

## Anti-RRH antibody (180-260 Internal) (STJ95033)

STJ95033

### GENERAL INFORMATION

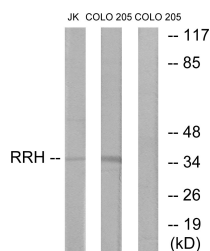
<b>Product Type</b>	Primary antibodies
<b>Short Description</b>	Rabbit polyclonal antibody anti-Visual Pigment-Like Receptor Peropsin (180-260 Internal) is suitable for use in Western Blot, Immunohistochemistry, Immunofluorescence and ELISA research applications.
<b>Applications</b>	WB, IHC-P, IF-P, ELISA
<b>Host/Source</b>	Rabbit
<b>Reactivity</b>	Human, Rat, Mouse

### PRODUCT PROPERTIES

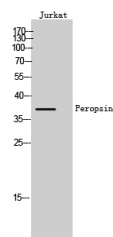
<b>Clonality</b>	Polyclonal
<b>Clone ID</b>	
<b>Concentration</b>	1 mg/mL
<b>Conjugation</b>	Unconjugated
<b>Purification</b>	The antibody was affinity-purified from rabbit anti-serum by affinity-chromatography.
<b>Dilution</b>	WB 1:500-1:2000
<b>Range</b>	ELISA 1:10000
<b>Formulation</b>	PBS, 50% Glycerol, 0.5% BSA and 0.02% Sodium Azide.
<b>Isotype</b>	IgG
<b>Storage</b>	Store at -20°C for up to 1 year from the date of receipt, and avoid repeat freeze-thaw cycles.
<b>Instruction</b>	

### TARGET INFORMATION

<b>Gene ID</b>	<a href="#">10692</a>
<b>Gene Symbol</b>	<a href="#">RRH</a>
<b>Uniprot ID</b>	<a href="#">OPSX_HUMAN</a>
<b>Immunogen</b>	The antiserum was produced against synthesized peptide derived from human RRH at amino acid range 201-250
<b>Immunogen Region</b>	180-260 Internal
<b>Specificity</b>	RRH polyclonal antibody (Visual Pigment-Like Receptor Peropsin) binds to endogenous Visual Pigment-Like Receptor Peropsin at the amino acid region 180-260 Internal.
<b>Immunogen Sequence</b>	



Western blot analysis of lysates from Jurkat and COLO cells, using RRH Antibody. The lane on the right is blocked with the synthesized peptide.



Western blot analysis of Jurkat cells using Peropsin Polyclonal Antibody