

Anti-SLC15A1 antibody (200-280 Internal) (STJ95027)

STJ95027

GENERAL INFORMATION

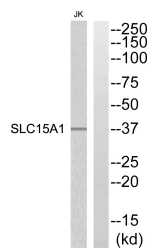
Product Type	Primary antibodies
Short Description	Rabbit polyclonal antibody anti-Solute Carrier Family 15 Member 1 (200-280 Internal) is suitable for use in Western Blot and ELISA research applications.
Applications	WB, ELISA
Host/Source	Rabbit
Reactivity	Human, Mouse, Rat

PRODUCT PROPERTIES

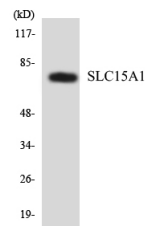
Clonality	Polyclonal
Clone ID	
Concentration	1 mg/mL
Conjugation	Unconjugated
Purification	The antibody was affinity-purified from rabbit anti-serum by affinity-chromatography.
Dilution Range	WB 1:500-1:2000 ELISA 1:40000
Formulation	PBS, 50% Glycerol, 0.5% BSA and 0.02% Sodium Azide.
Isotype	IgG
Storage Instruction	Store at -20°C for up to 1 year from the date of receipt, and avoid repeat freeze-thaw cycles.

TARGET INFORMATION

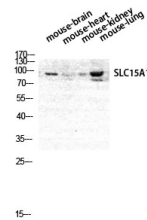
Gene ID	6564
Gene Symbol	SLC15A1
Uniprot ID	S15A1_HUMAN
Immunogen	The antiserum was produced against synthesized peptide derived from human SLC15A1 at amino acid range 225-274
Immunogen Region	200-280 Internal
Specificity	SLC15A1 polyclonal antibody (Solute Carrier Family 15 Member 1) binds to endogenous Solute Carrier Family 15 Member 1 at the amino acid region 200-280 Internal.
Immunogen Sequence	



Western blot analysis of SLC15A1 Antibody. The lane on the right is blocked with the SLC15A1 peptide.



Western blot analysis of the lysates from HeLa cells using SLC15A1 antibody.



Western blot analysis of mouse brain, MOUSE-HEART, MOUSE-LUNG, MOUSE-KIDNEY cells using PEPT1 Polyclonal Antibody diluted at 1: 1000

This product is suitable for in-vitro studies under the RESEARCH USE ONLY [RUO] licence. This product must not be used as for diagnostic or other medical purposes.
St John's Laboratory Ltd, Knowledge Dock Business Centre, University Way, London, E16 2RD | Tel: 0208 223 3081