

Anti-PEA15 antibody (40-120) (STJ95020)

STJ95020

GENERAL INFORMATION

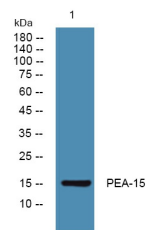
Product Type	Primary antibodies
Short Description	Rabbit polyclonal antibody anti-Astrocytic Phosphoprotein Pea-15 (40-120) is suitable for use in Immunohistochemistry, Immunofluorescence, Western Blot and ELISA research applications.
Applications	IHC-P, IF-P, WB, ELISA
Host/Source	Rabbit
Reactivity	Human, Mouse, Rat

PRODUCT PROPERTIES

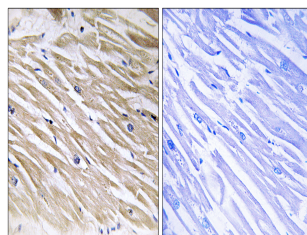
Clonality	Polyclonal
Clone ID	
Concentration	1 mg/mL
Conjugation	Unconjugated
Purification	The antibody was affinity-purified from rabbit anti-serum by affinity-chromatography.
Dilution Range	WB 1:500-2000 IHC 1:100-1:300 ELISA 1:5000
Formulation	PBS, 50% Glycerol, 0.5% BSA and 0.02% Sodium Azide.
Isotype	IgG
Storage Instruction	Store at -20°C for up to 1 year from the date of receipt, and avoid repeat freeze-thaw cycles.

TARGET INFORMATION

Gene ID	8682
Gene Symbol	PEA15
Uniprot ID	PEA15_HUMAN
Immunogen	The antiserum was produced against synthesized peptide derived from human PEA-15 at amino acid range 70-119
Immunogen Region	40-120
Specificity	PEA15 polyclonal antibody (Astrocytic Phosphoprotein Pea-15) binds to endogenous Astrocytic Phosphoprotein Pea-15 at the amino acid region 40-120.
Immunogen Sequence	



Western blot analysis of lysates from Jarkat cells, primary antibody was diluted at 1:1000, 4°C over night



Immunohistochemistry analysis of paraffin-embedded human heart tissue, using PEA-15 Antibody. The picture on the right is blocked with the synthesized peptide.