

Anti-ARHGEF11 antibody (170-250 N-Term) (STJ95017)

STJ95017

GENERAL INFORMATION

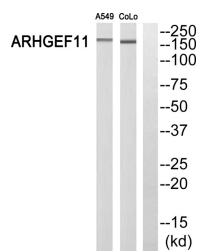
Product Type	Primary antibodies
Short Description	Rabbit polyclonal antibody anti-Rho Guanine Nucleotide Exchange Factor 11 (170-250 N-Term) is suitable for use in Western Blot and ELISA research applications.
Applications	WB, ELISA
Host/Source	Rabbit
Reactivity	Human, Mouse, Rat

PRODUCT PROPERTIES

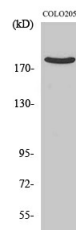
Clonality	Polyclonal
Clone ID	
Concentration	1 mg/mL
Conjugation	Unconjugated
Purification	The antibody was affinity-purified from rabbit anti-serum by affinity-chromatography.
Dilution Range	WB 1:500-1:2000 ELISA 1:5000
Formulation	PBS, 50% Glycerol, 0.5% BSA and 0.02% Sodium Azide.
Isotype	IgG
Storage Instruction	Store at -20°C for up to 1 year from the date of receipt, and avoid repeat freeze-thaw cycles.

TARGET INFORMATION

Gene ID	9826
Gene Symbol	ARHGEF11
Uniprot ID	ARHGB_HUMAN
Immunogen	The antiserum was produced against synthesized peptide derived from human ARHGEF11 at amino acid range 198-247
Immunogen Region	170-250 N-Term
Specificity	ARHGEF11 polyclonal antibody (Rho Guanine Nucleotide Exchange Factor 11) binds to endogenous Rho Guanine Nucleotide Exchange Factor 11 at the amino acid region 170-250 N-Term.
Immunogen Sequence	



Western blot analysis of ARHGEF11 Antibody. The lane on the right is blocked with the ARHGEF11 peptide.



Western blot analysis of various cells using PDZ-RhoGEF Polyclonal Antibody

This product is suitable for in-vitro studies under the RESEARCH USE ONLY [RUO] licence. This product must not be used as for diagnostic or other medical purposes.
St John's Laboratory Ltd, Knowledge Dock Business Centre, University Way, London, E16 2RD | Tel: 0208 223 3081