

Anti-PDK2 antibody (230-310 Internal) (STJ95011)

STJ95011

GENERAL INFORMATION

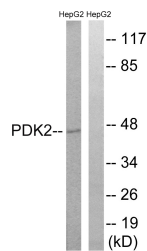
Product Type	Primary antibodies
Short Description	Rabbit polyclonal antibody anti-Pyruvate Dehydrogenase (230-310 Internal) is suitable for use in Western Blot, Immunohistochemistry, Immunofluorescence and ELISA research applications.
Applications	WB, IHC-P, IF-P, ELISA
Host/Source	Rabbit
Reactivity	Human, Mouse, Rat

PRODUCT PROPERTIES

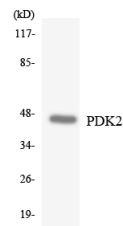
Clonality	Polyclonal
Clone ID	
Concentration	1 mg/mL
Conjugation	Unconjugated
Purification	The antibody was affinity-purified from rabbit anti-serum by affinity-chromatography.
Dilution Range	WB 1:500-1:2000 IHC 1:100-1:300 ELISA 1:20000
Formulation	PBS, 50% Glycerol, 0.5% BSA and 0.02% Sodium Azide.
Isotype	IgG
Storage Instruction	Store at -20°C for up to 1 year from the date of receipt, and avoid repeat freeze-thaw cycles.

TARGET INFORMATION

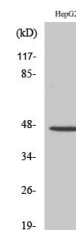
Gene ID	5164
Gene Symbol	PDK2
Uniprot ID	PDK2_HUMAN
Immunogen	The antiserum was produced against synthesized peptide derived from human PDK2 at amino acid range 260-309
Immunogen Region	230-310 Internal
Specificity	PDK2 polyclonal antibody (Pyruvate Dehydrogenase) binds to endogenous Pyruvate Dehydrogenase at the amino acid region 230-310 Internal.
Immunogen Sequence	



Western blot analysis of lysates from HepG2 cells, using PDK2 Antibody. The lane on the right is blocked with the synthesized peptide.



Western blot analysis of the lysates from HepG2 cells using PDK2 antibody.



Western blot analysis of various cells using PDK2 Polyclonal Antibody diluted at 1: 500

This product is suitable for in-vitro studies under the RESEARCH USE ONLY [RUO] licence. This product must not be used as for diagnostic or other medical purposes.
St John's Laboratory Ltd, Knowledge Dock Business Centre, University Way, London, E16 2RD | Tel: 0208 223 3081