

Anti-PDPK1 antibody (180-260) (STJ95010)

STJ95010

GENERAL INFORMATION

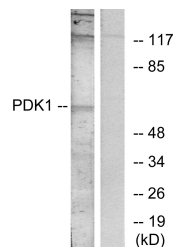
Product Type	Primary antibodies
Short Description	Rabbit polyclonal antibody anti-3-Phosphoinositide-Dependent Protein Kinase 1 (180-260) is suitable for use in Immunofluorescence, Immunocytochemistry, Western Blot, Immunohistochemistry and ELISA research applications.
Applications	IF, ICC, WB, IHC-P, ELISA
Host/Source	Rabbit
Reactivity	Human, Mouse, Rat

PRODUCT PROPERTIES

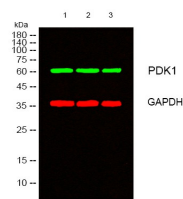
Clonality	Polyclonal
Clone ID	
Concentration	1 mg/mL
Conjugation	Unconjugated
Purification	The antibody was affinity-purified from rabbit anti-serum by affinity-chromatography.
Dilution	IF 1:50-200
Range	WB 1:500-1:2000 IHC 1:100-1:300 ELISA 1:10000
Formulation	PBS, 50% Glycerol, 0.5% BSA and 0.02% Sodium Azide.
Isotype	IgG
Storage Instruction	Store at -20°C for up to 1 year from the date of receipt, and avoid repeat freeze-thaw cycles.

TARGET INFORMATION

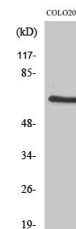
Gene ID	5170
Gene Symbol	PDPK1
Uniprot ID	PDPK1_HUMAN
Immunogen	The antiserum was produced against synthesized peptide derived from human PDK1 at amino acid range 210-259
Immunogen Region	180-260
Specificity	PDPK1 polyclonal antibody (3-Phosphoinositide-Dependent Protein Kinase 1) binds to endogenous 3-Phosphoinositide-Dependent Protein Kinase 1 at the amino acid region 180-260.
Immunogen Sequence	



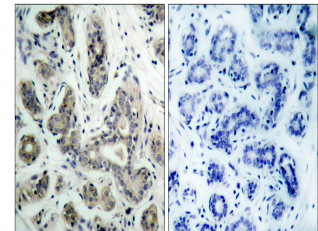
Western blot analysis of lysates from MDA-MB-435 cells, treated with EGF, using PDK1 Antibody. The lane on the right is blocked with the synthesized peptide.



Western blot analysis of lysates from 1) HeLa, 2) COLO, 3) 293T cells. (Green) primary antibody was diluted at 1:1000, 4°C over night, secondary antibody (cat: NA) was diluted at 1:10000, 37°C 1hour. (Red) GAPDH monoclonal antibody (2B8) (cat: STJ56931) antibody was diluted at 1:5000 as loading control, 4°C over night, secondary antibody (cat: NA) was diluted at 1:10000, 37°C 1hour.



Western blot analysis of COLO205 cells using PDK1 Polyclonal Antibody diluted at 1: 1000



Immunohistochemistry analysis of paraffin-embedded human breast carcinoma tissue, using PDK1 Antibody. The picture on the right is blocked with the synthesized peptide.

This product is suitable for in-vitro studies under the RESEARCH USE ONLY [RUO] licence. This product must not be used as for diagnostic or other medical purposes.

St John's Laboratory Ltd, Knowledge Dock Business Centre, University Way, London, E16 2RD | Tel: 0208 223 3081