

Anti-PDHA1 antibody (290-370 C-Term) (STJ95006)

STJ95006

GENERAL INFORMATION

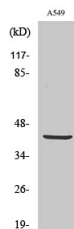
Product Type	Primary antibodies
Short Description	Rabbit polyclonal antibody anti-Pyruvate Dehydrogenase E1 Component Subunit Alpha-Somatic Form-Mitochondrial (290-370 C-Term) is suitable for use in Western Blot, Immunohistochemistry, Immunofluorescence and ELISA research applications.
Applications	WB, IHC-P, IF-P, ELISA
Host/Source	Rabbit
Reactivity	Human, Mouse, Rat

PRODUCT PROPERTIES

Clonality	Polyclonal
Clone ID	
Concentration	1 mg/mL
Conjugation	Unconjugated
Purification	The antibody was affinity-purified from rabbit anti-serum by affinity-chromatography.
Dilution Range	WB 1:500-1:2000 IHC 1:100-1:300 ELISA 1:40000
Formulation	PBS, 50% Glycerol, 0.5% BSA and 0.02% Sodium Azide.
Isotype	IgG
Storage Instruction	Store at -20°C for up to 1 year from the date of receipt, and avoid repeat freeze-thaw cycles.

TARGET INFORMATION

Gene ID	5160
Gene Symbol	PDHA1
Uniprot ID	ODPA_HUMAN
Immunogen Region	The antiserum was produced against synthesized peptide derived from human PDHA1 at amino acid range 314-363 290-370 C-Term
Specificity	PDHA1 polyclonal antibody (Pyruvate Dehydrogenase E1 Component Subunit Alpha-Somatic Form-Mitochondrial) binds to endogenous Pyruvate Dehydrogenase E1 Component Subunit Alpha-Somatic Form-Mitochondrial at the amino acid region 290-370 C-Term.
Immunogen Sequence	



Western blot analysis of various cells using PDHA1 Polyclonal Antibody diluted at 1: 2000

This product is suitable for in-vitro studies under the RESEARCH USE ONLY [RUO] licence. This product must not be used as for diagnostic or other medical purposes.
St John's Laboratory Ltd, Knowledge Dock Business Centre, University Way, London, E16 2RD | Tel: 0208 223 3081