

Anti-PDGFRB antibody (680-760) (STJ95005)

STJ95005

GENERAL INFORMATION

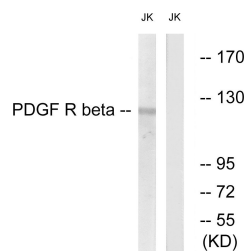
Product Type	Primary antibodies
Short Description	Rabbit polyclonal antibody anti-Platelet-Derived Growth Factor Receptor Beta (680-760) is suitable for use in Western Blot, Immunohistochemistry, Immunofluorescence and ELISA research applications.
Applications	WB, IHC-P, IF-P, ELISA
Host/Source	Rabbit
Reactivity	Human, Mouse, Rat

PRODUCT PROPERTIES

Clonality	Polyclonal
Clone ID	
Concentration	1 mg/mL
Conjugation	Unconjugated
Purification	The antibody was affinity-purified from rabbit anti-serum by affinity-chromatography.
Dilution Range	WB 1:500-1:2000 IHC 1:100-1:300 ELISA 1:5000
Formulation	PBS, 50% Glycerol, 0.5% BSA and 0.02% Sodium Azide.
Isotype	IgG
Storage Instruction	Store at -20°C for up to 1 year from the date of receipt, and avoid repeat freeze-thaw cycles.

TARGET INFORMATION

Gene ID	5159
Gene Symbol	PDGFRB
Uniprot ID	PGFRB_HUMAN
Immunogen Region	The antiserum was produced against synthesized peptide derived from human PDGFR beta at amino acid range 711-760 680-760
Specificity	PDGFRB polyclonal antibody (Platelet-Derived Growth Factor Receptor Beta) binds to endogenous Platelet-Derived Growth Factor Receptor Beta at the amino acid region 680-760.
Immunogen Sequence	



Western blot analysis of lysates from Jurkat cells, treated with TNF- α 20ng/ml 5', using PDGFR beta Antibody. The lane on the right is blocked with the synthesized peptide.