

## Anti-PDGFRα antibody (700-780) (STJ95000)

STJ95000

### GENERAL INFORMATION

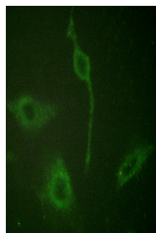
<b>Product Type</b>	Primary antibodies
<b>Short Description</b>	Rabbit polyclonal antibody anti-Platelet-Derived Growth Factor Receptor Alpha (700-780) is suitable for use in Western Blot, Immunohistochemistry, Immunofluorescence, Immunocytochemistry and ELISA research applications.
<b>Applications</b>	WB, IHC-P, IF, ICC, ELISA
<b>Host/Source</b>	Rabbit
<b>Reactivity</b>	Human, Mouse, Rat

### PRODUCT PROPERTIES

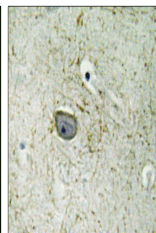
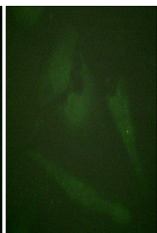
<b>Clonality</b>	Polyclonal
<b>Clone ID</b>	
<b>Concentration</b>	1 mg/mL
<b>Conjugation</b>	Unconjugated
<b>Purification</b>	The antibody was affinity-purified from rabbit anti-serum by affinity-chromatography.
<b>Dilution Range</b>	IHC 1:100-1:300 IF 1:200-1:1000 ELISA 1:5000
<b>Formulation</b>	PBS, 50% Glycerol, 0.5% BSA and 0.02% Sodium Azide.
<b>Isotype</b>	IgG
<b>Storage Instruction</b>	Store at 20°C for up to 1 year from the date of receipt, and avoid repeat freeze-thaw cycles.

### TARGET INFORMATION

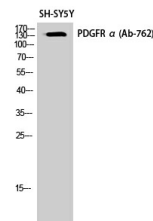
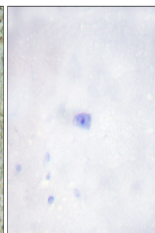
<b>Gene ID</b>	5156
<b>Gene Symbol</b>	PDGFRA
<b>Uniprot ID</b>	PGFRA_HUMAN
<b>Immunogen</b>	The antiserum was produced against synthesized peptide derived from human PDGFR alpha at amino acid range 731-780
<b>Immunogen Region</b>	700-780
<b>Specificity</b>	PDGFRA polyclonal antibody (Platelet-Derived Growth Factor Receptor Alpha) binds to endogenous Platelet-Derived Growth Factor Receptor Alpha at the amino acid region 700-780.
<b>Immunogen Sequence</b>	



Immunofluorescence analysis of HeLa cells, using PDGFR alpha Antibody. The picture on the right is blocked with the synthesized peptide.



Immunohistochemistry analysis of paraffin-embedded human brain tissue, using PDGFR alpha Antibody. The picture on the right is blocked with the synthesized peptide.



Western blot analysis of SH-SY5Y cells using PDGFR-Alpha Polyclonal Antibody

This product is suitable for in-vitro studies under the RESEARCH USE ONLY [RUO] licence. This product must not be used as for diagnostic or other medical purposes.  
St John's Laboratory Ltd, Knowledge Dock Business Centre, University Way, London, E16 2RD | Tel: 0208 223 3081