

Anti-PDGFB antibody (30-110 Internal) (STJ94996)

STJ94996

GENERAL INFORMATION

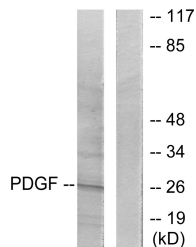
Product Type	Primary antibodies
Short Description	Rabbit polyclonal antibody anti-Platelet-Derived Growth Factor Subunit B (30-110 Internal) is suitable for use in Immunofluorescence, Immunocytochemistry, Western Blot, Immunohistochemistry and ELISA research applications.
Applications	IF, ICC, WB, IHC-P, ELISA
Host/Source	Rabbit
Reactivity	Human, Mouse, Rat

PRODUCT PROPERTIES

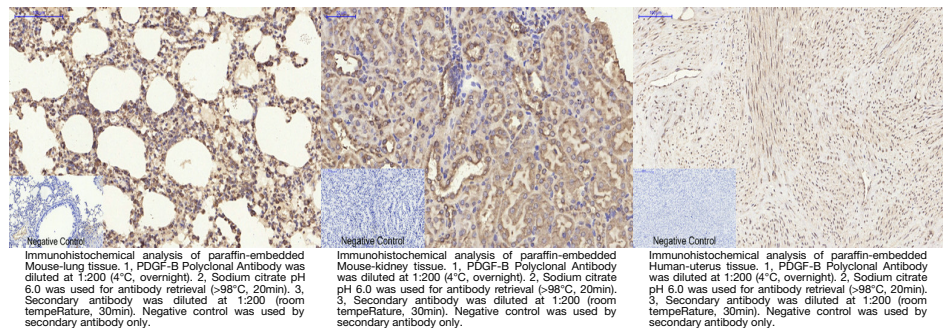
Clonality	Polyclonal
Clone ID	
Concentration	1 mg/mL
Conjugation	Unconjugated
Purification	The antibody was affinity-purified from rabbit anti-serum by affinity-chromatography.
Dilution Range	IF 1:50-200 WB 1:500-1:2000 IHC 1:100-1:300 ELISA 1:10000
Formulation	PBS, 50% Glycerol, 0.5% BSA and 0.02% Sodium Azide.
Isotype	IgG
Storage Instruction	Store at -20°C for up to 1 year from the date of receipt, and avoid repeat freeze-thaw cycles.

TARGET INFORMATION

Gene ID	5155
Gene Symbol	PDGFB
Uniprot ID	PDGFB_HUMAN
Immunogen	The antiserum was produced against synthesized peptide derived from human PDGFB at amino acid range 16-65
Immunogen Region	30-110 Internal
Specificity	PDGFB polyclonal antibody (Platelet-Derived Growth Factor Subunit B) binds to endogenous Platelet-Derived Growth Factor Subunit B at the amino acid region 30-110 Internal.
Immunogen Sequence	



Western blot analysis of lysates from NIH/3T3 cells, using PDGFB Antibody. The lane on the right is blocked with the synthesized peptide.



This product is suitable for in-vitro studies under the RESEARCH USE ONLY [RUO] licence. This product must not be used as for diagnostic or other medical purposes.
St John's Laboratory Ltd, Knowledge Dock Business Centre, University Way, London, E16 2RD | Tel: 0208 223 3081