

Anti-PDE4C antibody (260-340 Internal) (STJ94994)

STJ94994

GENERAL INFORMATION

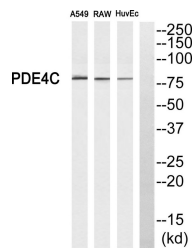
Product Type	Primary antibodies
Short Description	Rabbit polyclonal antibody anti-Camp-Specific 3 5 Cyclic Phosphodiesterase 4c (260-340 Internal) is suitable for use in Western Blot and ELISA research applications.
Applications	WB, ELISA
Host/Source	Rabbit
Reactivity	Human, Mouse, Rat

PRODUCT PROPERTIES

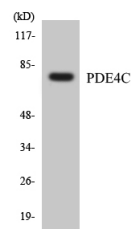
Clonality	Polyclonal
Clone ID	
Concentration	1 mg/mL
Conjugation	Unconjugated
Purification	The antibody was affinity-purified from rabbit anti-serum by affinity-chromatography.
Dilution	WB 1:500-1:2000
Range	ELISA 1:5000
Formulation	PBS, 50% Glycerol, 0.5% BSA and 0.02% Sodium Azide.
Isotype	IgG
Storage	Store at -20°C for up to 1 year from the date of receipt, and avoid repeat freeze-thaw cycles.
Instruction	

TARGET INFORMATION

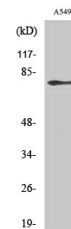
Gene ID	5143
Gene Symbol	PDE4C
Uniprot ID	PDE4C_HUMAN
Immunogen	The antiserum was produced against synthesized peptide derived from human PDE4C at amino acid range 291-340
Immunogen Region	260-340 Internal
Specificity	PDE4C polyclonal antibody (Camp-Specific 3 NA-5 NA-Cyclic Phosphodiesterase 4c) binds to endogenous Camp-Specific 3 NA-5 NA-Cyclic Phosphodiesterase 4c at the amino acid region 260-340 Internal.
Immunogen Sequence	



Western blot analysis of PDE4C Antibody. The lane on the right is blocked with the PDE4C peptide.



Western blot analysis of the lysates from HeLa cells using PDE4C antibody.



Western blot analysis of various cells using PDE4C Polyclonal Antibody

This product is suitable for in-vitro studies under the RESEARCH USE ONLY [RUO] licence. This product must not be used as for diagnostic or other medical purposes.
 St John's Laboratory Ltd, Knowledge Dock Business Centre, University Way, London, E16 2RD | Tel: 0208 223 3081