

Anti-PDE10A antibody (40-120 N-Term) (STJ94992)

STJ94992

GENERAL INFORMATION

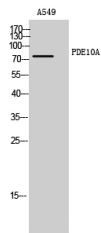
Product Type	Primary antibodies
Short Description	Rabbit polyclonal antibody anti-Camp And Camp-Inhibited Cgmp 3 5 Cyclic Phosphodiesterase 10a (40-120 N-Term) is suitable for use in Western Blot and ELISA research applications.
Applications	WB, ELISA
Host/Source	Rabbit
Reactivity	Human, Rat

PRODUCT PROPERTIES

Clonality	Polyclonal
Clone ID	
Concentration	1 mg/mL
Conjugation	Unconjugated
Purification	The antibody was affinity-purified from rabbit anti-serum by affinity-chromatography.
Dilution	WB 1:500-1:2000
Range	ELISA 1:5000
Formulation	PBS, 50% Glycerol, 0.5% BSA and 0.02% Sodium Azide.
Isotype	IgG
Storage	Store at -20°C for up to 1 year from the date of receipt, and avoid repeat freeze-thaw cycles.
Instruction	

TARGET INFORMATION

Gene ID	10846
Gene Symbol	PDE10A
Uniprot ID	PDE10_HUMAN
Immunogen	The antiserum was produced against synthesized peptide derived from human PDE10A at amino acid range 21-70
Immunogen Region	40-120 N-Term
Specificity	PDE10A polyclonal antibody (Camp And Camp-Inhibited Cgmp 3 NA-5 NA-Cyclic Phosphodiesterase 10a) binds to endogenous Camp And Camp-Inhibited Cgmp 3 NA-5 NA-Cyclic Phosphodiesterase 10a at the amino acid region 40-120 N-Term.
Immunogen Sequence	



Western blot analysis of A549 cells using PDE10A Polyclonal Antibody

This product is suitable for in-vitro studies under the RESEARCH USE ONLY [RUO] licence. This product must not be used as for diagnostic or other medical purposes.
 St John's Laboratory Ltd, Knowledge Dock Business Centre, University Way, London, E16 2RD | Tel: 0208 223 3081