

Anti-PTGDR antibody (230-310 C-Term) (STJ94989)

STJ94989

GENERAL INFORMATION

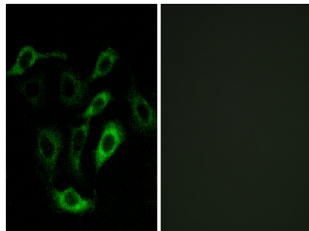
Product Type	Primary antibodies
Short Description	Rabbit polyclonal antibody anti-Prostaglandin D2 Receptor (230-310 C-Term) is suitable for use in Western Blot, Immunohistochemistry, Immunofluorescence, Immunocytochemistry and ELISA research applications.
Applications	WB, IHC-P, IF, ICC, ELISA
Host/Source	Rabbit
Reactivity	Human, Rat, Mouse

PRODUCT PROPERTIES

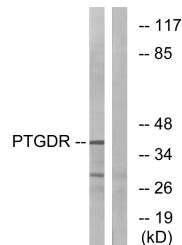
Clonality	Polyclonal
Clone ID	
Concentration	1 mg/mL
Conjugation	Unconjugated
Purification	The antibody was affinity-purified from rabbit anti-serum by affinity-chromatography.
Dilution Range	WB 1:500-1:2000 IHC 1:100-1:300 IF 1:200-1:1000 ELISA 1:5000
Formulation	PBS, 50% Glycerol, 0.5% BSA and 0.02% Sodium Azide.
Isotype	IgG
Storage Instruction	Store at -20°C for up to 1 year from the date of receipt, and avoid repeat freeze-thaw cycles.

TARGET INFORMATION

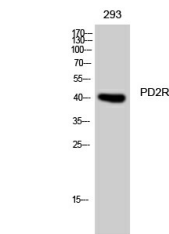
Gene ID	5729
Gene Symbol	PTGDR
Uniprot ID	PD2R_HUMAN
Immunogen	The antiserum was produced against synthesized peptide derived from human PTGDR at amino acid range 263-312
Immunogen Region	230-310 C-Term
Specificity	PTGDR polyclonal antibody (Prostaglandin D2 Receptor) binds to endogenous Prostaglandin D2 Receptor at the amino acid region 230-310 C-Term.
Immunogen Sequence	



Immunofluorescence analysis of A549 cells, using PTGDR Antibody. The picture on the right is blocked with the synthesized peptide.



Western blot analysis of lysates from HepG2 cells, using PTGDR Antibody. The lane on the right is blocked with the synthesized peptide.



Western blot analysis of 293 cells using PD2R Polyclonal Antibody diluted at 1: 1000

This product is suitable for in-vitro studies under the RESEARCH USE ONLY [RUO] licence. This product must not be used as for diagnostic or other medical purposes.
St John's Laboratory Ltd, Knowledge Dock Business Centre, University Way, London, E16 2RD | Tel: 0208 223 3081