

Anti-PLD4 antibody (430-510 C-Term) (STJ94987)

STJ94987

GENERAL INFORMATION

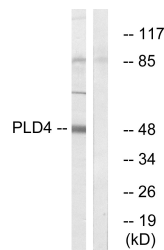
Product Type	Primary antibodies
Short Description	Rabbit polyclonal antibody anti-5' 3' Exonuclease Pld4 (430-510 C-Term) is suitable for use in Western Blot and ELISA research applications.
Applications	WB, ELISA
Host/Source	Rabbit
Reactivity	Human, Mouse, Rat

PRODUCT PROPERTIES

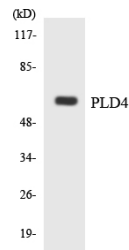
Clonality	Polyclonal
Clone ID	
Concentration	1 mg/mL
Conjugation	Unconjugated
Purification	The antibody was affinity-purified from rabbit anti-serum by affinity-chromatography.
Dilution Range	WB 1:500-1:2000 ELISA 1:5000
Formulation	PBS, 50% Glycerol, 0.5% BSA and 0.02% Sodium Azide.
Isotype	IgG
Storage Instruction	Store at -20°C for up to 1 year from the date of receipt, and avoid repeat freeze-thaw cycles.

TARGET INFORMATION

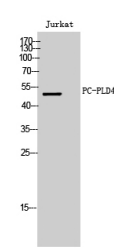
Gene ID	122618
Gene Symbol	PLD4
Uniprot ID	PLD4_HUMAN
Immunogen	The antiserum was produced against synthesized peptide derived from human PLD4 at amino acid range 457-506
Immunogen Region	430-510 C-Term
Specificity	PLD4 polyclonal antibody (5' NA-3' Exonuclease Pld4) binds to endogenous 5' NA-3' Exonuclease Pld4 at the amino acid region 430-510 C-Term.
Immunogen Sequence	



Western blot analysis of lysates from Jurkat cells, using PLD4 Antibody. The lane on the right is blocked with the synthesized peptide.



Western blot analysis of the lysates from K562 cells using PLD4 antibody.



Western blot analysis of Jurkat cells using PC-PLD4 Polyclonal Antibody.

This product is suitable for in-vitro studies under the RESEARCH USE ONLY [RUO] licence. This product must not be used as for diagnostic or other medical purposes.
St John's Laboratory Ltd, Knowledge Dock Business Centre, University Way, London, E16 2RD | Tel: 0208 223 3081