

Anti-PLD1 antibody (500-580) (STJ94983)

STJ94983

GENERAL INFORMATION

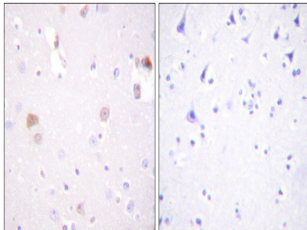
Product Type	Primary antibodies
Short Description	Rabbit polyclonal antibody anti-Phospholipase D1 (500-580) is suitable for use in Immunohistochemistry, Immunofluorescence and ELISA research applications.
Applications	IHC-P, IF-P, ELISA
Host/Source	Rabbit
Reactivity	Human, Mouse, Rat

PRODUCT PROPERTIES

Clonality	Polyclonal
Clone ID	
Concentration	1 mg/mL
Conjugation	Unconjugated
Purification	The antibody was affinity-purified from rabbit anti-serum by affinity-chromatography.
Dilution Range	IHC 1:100-1:300 ELISA 1:5000
Formulation	PBS, 50% Glycerol, 0.5% BSA and 0.02% Sodium Azide.
Isotype	IgG
Storage	Store at -20°C for up to 1 year from the date of receipt, and avoid repeat freeze-thaw cycles.
Instruction	

TARGET INFORMATION

Gene ID	5337
Gene Symbol	PLD1
Uniprot ID	PLD1_HUMAN
Immunogen	The antiserum was produced against synthesized peptide derived from human PLD1 at amino acid range 527-576
Immunogen Region	500-580
Specificity	PLD1 polyclonal antibody (Phospholipase D1) binds to endogenous Phospholipase D1 at the amino acid region 500-580.
Immunogen Sequence	



Immunohistochemistry analysis of paraffin-embedded human brain tissue, using PLD1 Antibody. The picture on the right is blocked with the synthesized peptide.

This product is suitable for in-vitro studies under the RESEARCH USE ONLY [RUO] licence. This product must not be used as for diagnostic or other medical purposes.
St John's Laboratory Ltd, Knowledge Dock Business Centre, University Way, London, E16 2RD | Tel: 0208 223 3081