

Anti-PC antibody (330-410 Internal) (STJ94981)

STJ94981

GENERAL INFORMATION

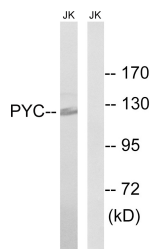
Product Type	Primary antibodies
Short Description	Rabbit polyclonal antibody anti-Pyruvate Carboxylase-Mitochondrial (330-410 Internal) is suitable for use in Western Blot, Immunohistochemistry, Immunofluorescence and ELISA research applications.
Applications	WB, IHC-P, IF-P, ELISA
Host/Source	Rabbit
Reactivity	Human, Mouse, Rat

PRODUCT PROPERTIES

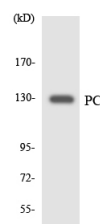
Clonality	Polyclonal
Clone ID	
Concentration	1 mg/mL
Conjugation	Unconjugated
Purification	The antibody was affinity-purified from rabbit anti-serum by affinity-chromatography.
Dilution Range	WB 1:500-1:2000 IHC 1:100-1:300 ELISA 1:40000
Formulation	PBS, 50% Glycerol, 0.5% BSA and 0.02% Sodium Azide.
Isotype	IgG
Storage Instruction	Store at -20°C for up to 1 year from the date of receipt, and avoid repeat freeze-thaw cycles.

TARGET INFORMATION

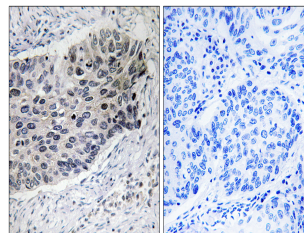
Gene ID	5091
Gene Symbol	PC
Uniprot ID	PYC_HUMAN
Immunogen Region	The antiserum was produced against synthesized peptide derived from human PC at amino acid range 357-406
Immunogen Region	330-410 Internal
Specificity	PC polyclonal antibody (Pyruvate Carboxylase-Mitochondrial) binds to endogenous Pyruvate Carboxylase-Mitochondrial at the amino acid region 330-410 Internal.
Immunogen Sequence	



Western blot analysis of lysates from Jurkat cells, using PC Antibody. The lane on the right is blocked with the synthesized peptide.



Western blot analysis of the lysates from HT-29 cells using PC antibody.



Immunohistochemistry analysis of paraffin-embedded human lung carcinoma tissue, using PC Antibody. The picture on the right is blocked with the synthesized peptide.

This product is suitable for in-vitro studies under the RESEARCH USE ONLY [RUO] licence. This product must not be used as for diagnostic or other medical purposes.
St John's Laboratory Ltd, Knowledge Dock Business Centre, University Way, London, E16 2RD | Tel: 0208 223 3081