

## Anti-PXN antibody (10-90) (STJ94970)

STJ94970

### GENERAL INFORMATION

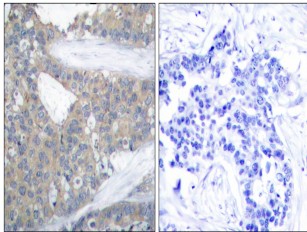
<b>Product Type</b>	Primary antibodies
<b>Short Description</b>	Rabbit polyclonal antibody anti-Paxillin (10-90) is suitable for use in Western Blot, Immunohistochemistry, Immunofluorescence, Immunocytochemistry and ELISA research applications.
<b>Applications</b>	WB, IHC-P, IF, ICC, ELISA
<b>Host/Source</b>	Rabbit
<b>Reactivity</b>	Human, Mouse, Rat, Monkey

### PRODUCT PROPERTIES

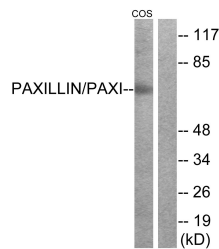
<b>Clonality</b>	Polyclonal
<b>Clone ID</b>	
<b>Concentration</b>	1 mg/mL
<b>Conjugation</b>	Unconjugated
<b>Purification</b>	The antibody was affinity-purified from rabbit anti-serum by affinity-chromatography.
<b>Dilution Range</b>	WB 1:500-1:2000 IHC 1:100-1:300 IF 1:200-1:1000 ELISA 1:20000
<b>Formulation</b>	PBS, 50% Glycerol, 0.5% BSA and 0.02% Sodium Azide.
<b>Isotype</b>	IgG
<b>Storage Instruction</b>	Store at -20°C for up to 1 year from the date of receipt, and avoid repeat freeze-thaw cycles.

### TARGET INFORMATION

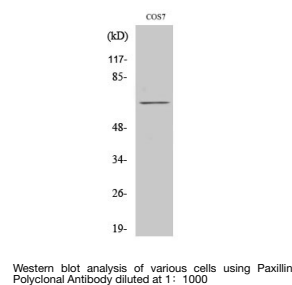
<b>Gene ID</b>	5829
<b>Gene Symbol</b>	PXN
<b>Uniprot ID</b>	PAXI_HUMAN
<b>Immunogen</b>	The antiserum was produced against synthesized peptide derived from human Paxillin at amino acid range 15-64
<b>Immunogen Region</b>	10-90
<b>Specificity</b>	PXN polyclonal antibody (Paxillin) binds to endogenous Paxillin at the amino acid region 10-90.
<b>Immunogen Sequence</b>	



Immunohistochemistry analysis of paraffin-embedded human breast carcinoma tissue, using Paxillin Antibody. The picture on the right is blocked with the synthesized peptide.



Western blot analysis of lysates from COS-7 cells, treated with Estradiol 0.1 Mu M 20', using Paxillin Antibody. The lane on the right is blocked with the synthesized peptide.



Western blot analysis of various cells using Paxillin Polyclonal Antibody diluted at 1: 1000