

Anti-PARP-3 antibody (STJ94960)

STJ94960

GENERAL INFORMATION

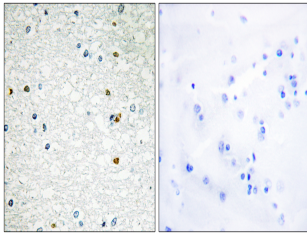
Product Type	Primary antibodies
Short Description	Rabbit polyclonal anti-PARP-3 antibody is suitable for use in Immunohistochemistry and ELISA.
Background	
Applications	IHC-P, ELISA
Host/Source	Rabbit
Reactivity	Human

PRODUCT PROPERTIES

Clonality	Polyclonal
Clone ID	
Concentration	1 mg/ml
Conjugation	Unconjugated
Purification	The antibody was affinity-purified from rabbit antiserum by affinity-chromatography using an epitope-specific immunogen.
Dilution Range	IHC 1:100-1:300 ELISA 1:5000
Formulation	Liquid in PBS containing 50% glycerol, 0.5% BSA and 0.02% sodium azide.
Isotype	IgG
Storage Instruction	Store at -20°C, and avoid repeat freeze-thaw cycles.

TARGET INFORMATION

Gene ID	10039
Gene Symbol	PARP3
Uniprot ID	PARP3_HUMAN
Immunogen	Synthesized peptide derived from human PARP-3
Immunogen Region	10-90 aa, N-terminal
Specificity	PARP-3 polyclonal antibody detects endogenous levels of PARP-3 protein.
Immunogen Sequence	



Immunohistochemistry analysis of paraffin-embedded human brain, using PARP3 Antibody. The picture on the right is blocked with the synthesized peptide.

This product is suitable for in-vitro studies under the RESEARCH USE ONLY [RUO] licence. This product must not be used as for diagnostic or other medical purposes.
St John's Laboratory Ltd, Knowledge Dock Business Centre, University Way, London, E16 2RD | Tel: 0208 223 3081 | Fax: 0207 681 2580