

Anti-F2RL3 antibody (40-120 Internal) (STJ94953)

STJ94953

GENERAL INFORMATION

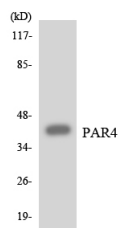
Product Type	Primary antibodies
Short Description	Rabbit polyclonal antibody anti-Proteinase-Activated Receptor 4 (40-120 Internal) is suitable for use in Western Blot, Immunofluorescence, Immunocytochemistry and ELISA research applications.
Applications	WB, IF, ICC, ELISA
Host/Source	Rabbit
Reactivity	Human, Mouse, Rat

PRODUCT PROPERTIES

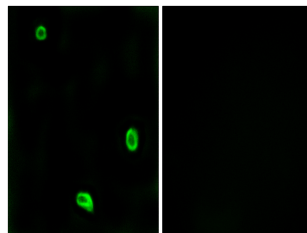
Clonality	Polyclonal
Clone ID	
Concentration	1 mg/mL
Conjugation	Unconjugated
Purification	The antibody was affinity-purified from rabbit anti-serum by affinity-chromatography.
Dilution Range	WB 1:500-1:2000 IF 1:200-1:1000 ELISA 1:10000
Formulation	PBS, 50% Glycerol, 0.5% BSA and 0.02% Sodium Azide.
Isotype	IgG
Storage Instruction	Store at -20°C for up to 1 year from the date of receipt, and avoid repeat freeze-thaw cycles.

TARGET INFORMATION

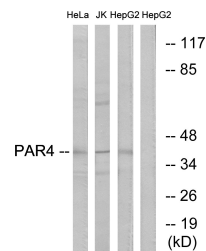
Gene ID	9002
Gene Symbol	F2RL3
Uniprot ID	PAR4_HUMAN
Immunogen	The antiserum was produced against synthesized peptide derived from human PAR4 at amino acid range 29-78
Immunogen Region	40-120 Internal
Specificity	F2RL3 polyclonal antibody (Proteinase-Activated Receptor 4) binds to endogenous Proteinase-Activated Receptor 4 at the amino acid region 40-120 Internal.
Immunogen Sequence	



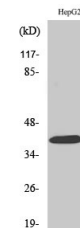
Western blot analysis of the lysates from HT-29 cells using PAR4 antibody.



Immunofluorescence analysis of LOVO cells, using PAR4 Antibody. The picture on the right is blocked with the synthesized peptide.



Western blot analysis of lysates from HepG2 and Jurkat/HeLa cells, using PAR4 Antibody. The lane on the right is blocked with the synthesized peptide.



Western blot analysis of various cells using PAR-4 Polyclonal Antibody

This product is suitable for in-vitro studies under the RESEARCH USE ONLY [RUO] licence. This product must not be used as for diagnostic or other medical purposes.
St John's Laboratory Ltd, Knowledge Dock Business Centre, University Way, London, E16 2RD | Tel: 0208 223 3081