

Anti-PAK2 antibody (80-160) (STJ94949)

STJ94949

GENERAL INFORMATION

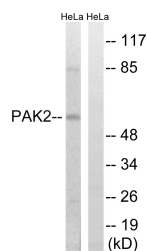
Product Type	Primary antibodies
Short Description	Rabbit polyclonal antibody anti-Serine/Threonine-Protein Kinase Pak 2 (80-160) is suitable for use in Western Blot, Immunohistochemistry, Immunofluorescence and ELISA research applications.
Applications	WB, IHC-P, IF-P, ELISA
Host/Source	Rabbit
Reactivity	Human, Mouse, Rat

PRODUCT PROPERTIES

Clonality	Polyclonal
Clone ID	
Concentration	1 mg/mL
Conjugation	Unconjugated
Purification	The antibody was affinity-purified from rabbit anti-serum by affinity-chromatography.
Dilution Range	WB 1:500-1:2000 IHC 1:100-1:300 ELISA 1:20000
Formulation	PBS, 50% Glycerol, 0.5% BSA and 0.02% Sodium Azide.
Isotype	IgG
Storage Instruction	Store at -20°C for up to 1 year from the date of receipt, and avoid repeat freeze-thaw cycles.

TARGET INFORMATION

Gene ID	5062
Gene Symbol	PAK2
Uniprot ID	PAK2_HUMAN
Immunogen	The antiserum was produced against synthesized peptide derived from human PAK2 at amino acid range 107-156
Immunogen Region	80-160
Specificity	PAK2 polyclonal antibody (Serine/Threonine-Protein Kinase Pak 2) binds to endogenous Serine/Threonine-Protein Kinase Pak 2 at the amino acid region 80-160.
Immunogen Sequence	



Western blot analysis of lysates from HeLa cells, treated with TSA 400nM 24h, using PAK2 Antibody. The lane on the right is blocked with the synthesized peptide.