

Anti-PAK2 antibody (140-220) (STJ94948)

STJ94948

GENERAL INFORMATION

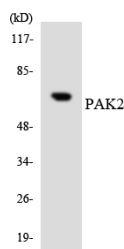
Product Type	Primary antibodies
Short Description	Rabbit polyclonal antibody anti-Serine/Threonine-Protein Kinase Pak 2 (140-220) is suitable for use in Western Blot and ELISA research applications.
Applications	WB, ELISA
Host/Source	Rabbit
Reactivity	Human, Mouse, Rat

PRODUCT PROPERTIES

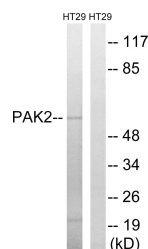
Clonality	Polyclonal
Clone ID	
Concentration	1 mg/mL
Conjugation	Unconjugated
Purification	The antibody was affinity-purified from rabbit anti-serum by affinity-chromatography.
Dilution Range	WB 1:500-1:2000 ELISA 1:20000
Formulation	PBS, 50% Glycerol, 0.5% BSA and 0.02% Sodium Azide.
Isotype	IgG
Storage	Store at -20°C for up to 1 year from the date of receipt, and avoid repeat freeze-thaw cycles.
Instruction	

TARGET INFORMATION

Gene ID	5062
Gene Symbol	PAK2
Uniprot ID	PAK2_HUMAN
Immunogen	The antiserum was produced against synthesized peptide derived from human PAK2 at amino acid range 163-212
Immunogen Region	140-220
Specificity	PAK2 polyclonal antibody (Serine/Threonine-Protein Kinase Pak 2) binds to endogenous Serine/Threonine-Protein Kinase Pak 2 at the amino acid region 140-220.
Immunogen Sequence	



Western blot analysis of the lysates from HepG2 cells using PAK2 antibody.



Western blot analysis of lysates from HT-29 cells, using PAK2 Antibody. The lane on the right is blocked with the synthesized peptide.

This product is suitable for in-vitro studies under the RESEARCH USE ONLY [RUO] licence. This product must not be used as for diagnostic or other medical purposes.
St John's Laboratory Ltd, Knowledge Dock Business Centre, University Way, London, E16 2RD | Tel: 0208 223 3081